

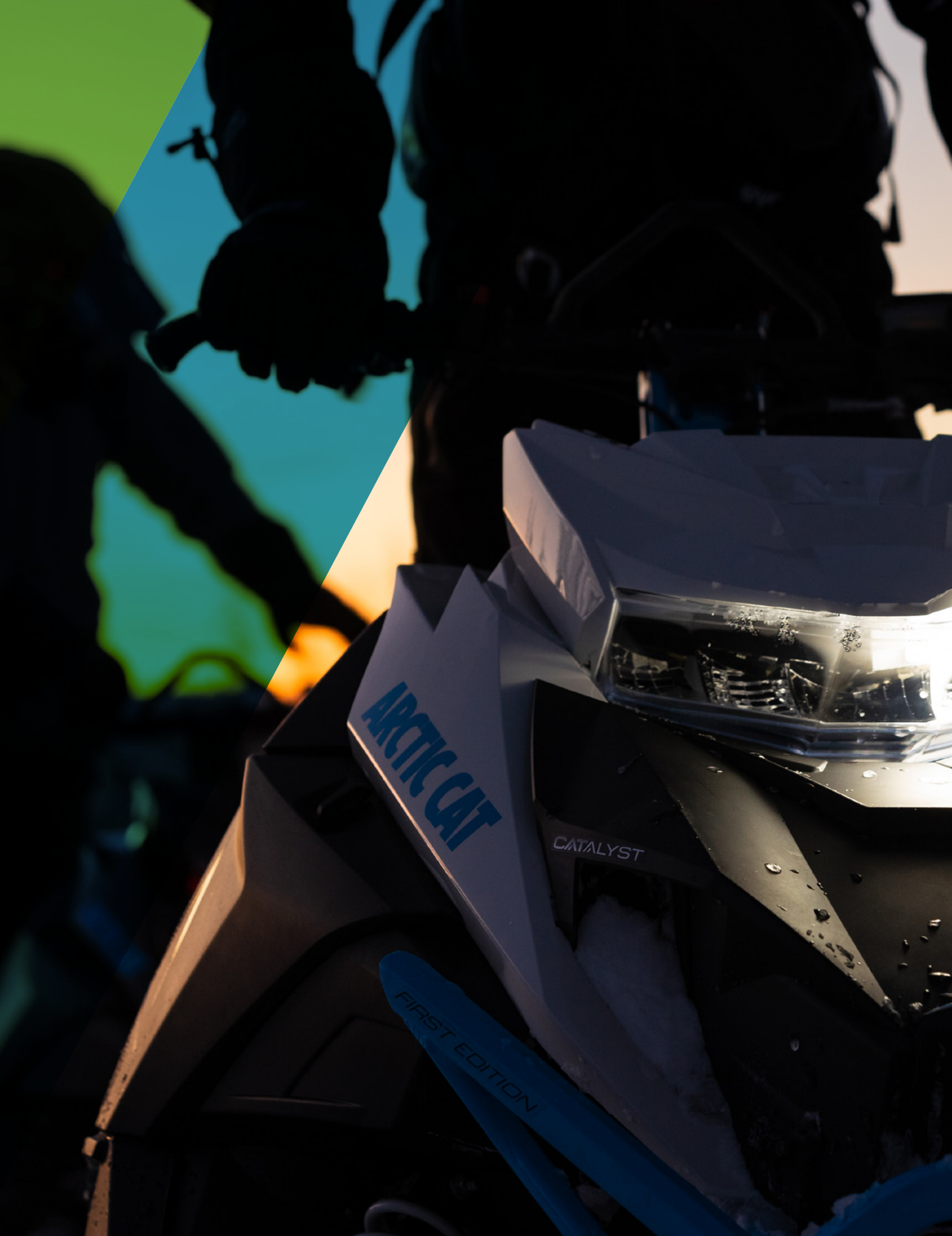


SNOWMOBILE
ACCESSORIES
INTERNATIONAL



2024





ARCTIC CAT

CATALYST

FIRST EDITION



ACCESSORIES

04	ACCESSORY KITS
08	COVERS & TRANSPORT
14	WINDSHIELDS
19	BAGS & STORAGE
28	BUMPERS
34	TOURING
40	UTILITY
42	HANDLEBARS
46	PROTECTION
52	YOUTH
58	PERFORMANCE
68	BACKCOUNTRY ACCESS
74	TRACKS
78	HANDLING & TRACTION
86	MAINTENANCE
90	BELTS
94	OIL & CARE
102	INDEX

FEATURED ACCESSORIES

34	TOURING
56	CROSSOVER
76	MOUNTAIN
100	TRAIL

SHARE THE RIDE



FEATURED ON SLED:
8639-355 / PROCROSS LIGHTED HAND GUARDS - MEDIUM GREEN



CUSTOMIZATION SIMPLIFIED



FEATURED ON SLED:
8639-515 / EVO FRONT BUMPER - FIRE RED
8639-519 / EVO REAR BUMPER - FIRE RED
8639-496 / ATACH 14L TUNNEL PACK

TRAIL



TRAIL BLAZER KIT

- 8639-197 Pro MTN Bumper (Black)
- 8639-030 Trail Pack (Large)
- 8639-185 Handlebar Bag
- 7639-688 Mid Touring Windshield (15-in.)

8639-434 BLACK | '18-'24 ZR 8000; '18-'23 ZR 6000;
'19-'24 ZR 7000



TRAIL BLAZER KIT

- 7639-301 Pro Bumper (Black)
- 8639-030 Trail Pack (Large)
- 8639-185 Handlebar Bag
- 7639-688 Mid Touring Windshield (15-in.)

8639-377 BLACK | '17-'24 ZR, Thundercat, Riot 9000

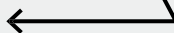


TRAIL BLAZER KIT

- 8639-390 ProClimb™ Bumper (Black Textured)
- 8639-363 Trail Pack
- 1616-089 High Touring Windshield (15-in.)

8639-375 BLACK | '21-'24 BLAST ZR, '22-'24 BLAST XR

CROSSOVER



FULL SEND KIT

- 8639-197 Pro MTN Bumper (Black)
- 8639-031 Mountain Pack
- 8639-041 Team Arctic Hand Guards
- 7639-700 Mid Performance Windshield (15-in.)

8639-373 BLACK | '20-'24 Riot 8000; '20-'23 RIOT 6000



MOUNTAIN

PRO KIT

- 8639-197 Pro MTN Bumper (Black)
- 8639-031 Mountain Pack
- 8639-186 Handlebar Bag

8639-371 BLACK | '18-'24 M, Riot 8000; '18-'23 M 6000



PRO KIT

- 8639-390 ProClimb Bumper (Black Textured)
- 8639-031 Mountain Pack
- 8639-364 Handlebar Bag

8639-370 BLACK | '21-'24 BLAST M



UTILITY



WINTER ESSENTIALS KIT

- 8639-390 ProClimb Bumper (Black Textured)
- 8639-416 Hitch Kit
- 8639-364 Handlebar Bag

8639-368 BLACK | '21-'24 BLAST LT, '22-'24 XR (ALL)



WINTER ESSENTIALS KIT

- 8639-400 Pro Bumper (Black)
- 7639-764 Cargo Bag
- 7639-383 High Touring Windshield (18")

8639-369 BLACK | '21-'24 Norseman X

YOUTH



STARTER KIT

- 7639-994 Tunnel Pack
- 8639-213 Team Arctic Hand Guards
- 7639-838 High Windshield (10")

8639-367 | '18-'24 ZR 200

COVERS & TRANSPORT



8639-522



8639-523



8639-526



8639-155



8639-160



8639-393



8639-392



8639-161



8639-394



ADVANTAGE COVERS

- Advantage covers provide unrivaled ease of use and a snug fit everytime
- Full-length perimeter straps conform to the sides of the snowmobile with single-point tension adjustment
- Premium cover made from water-repellant, UV-protected Surlast™ fabric
- Standard cover made from treated, high-quality canvas
- Adjustable hook-and-loop front fasteners enclose spindles
- Adjustable windshield strap and convenient zippered gas cap panel
- Trailerable
- Trail versions fit low, mid, and high windshields, mirrors, and hand guards
- MTN versions fit low windshields and hand guards only

8639-522- PREMIUM | '24 ZR, Riot 600 NEW

8639-523- PREMIUM | '24 M 600 NEW

8639-524- STANDARD | '24 ZR, Riot 600 NEW

8639-525- STANDARD | '24 M 600 NEW

8639-526- STANDARD | '24 ZR, Riot 600 with Passenger Seat NEW

PREMIUM COVERS

- The ultimate outdoor storage cover
- Fade-resistant, UV-protected, long-lasting premium Surlast fabric
- Water-repellent coating
- Adjustable windshield strap provides a custom windshield/mirror fit
- Cinch-down side attachments
- Adjustable hook-and-loop front spindle fasteners
- Easy-access, zippered gas cap panel
- Trailerable
- 129-137" models fit low, mid and high windshields and mirrors, 141-165" models fit low and mid windshields

8639-155 | '12-'24 F; ZR; Thundercat; XF 129-137" (EXCEPT '24 600)

8639-392 | '12-'24 M; Riot X; XF High Country; King Cat 141-165" (EXCEPT '24 600)

8639-160 | '12-'24 M; Riot X; XF High Country; King Cat 141-165" (Except '24 600)

8639-161 | '12-'24 M; Riot X; XF High Country; King Cat 141-165" (Except '24 600)

8639-393 | '20-'24 Riot; (EXCEPT '24 600) '20 Riot X 146"

8639-394 | '21-'24 Riot X 146"



STORAGE COVER

- Lightweight nylon cover is ideal for storage and keeping away dust
- Secure-fitting elastic bottom cord stretches to fit a wide variety of models
- Not recommended for trailering or prolonged outdoor use

8639-527 | UNIVERSAL (Except Models with Passenger Seat) NEW



POLYESTER COVERS

- Provides excellent outdoor storage
- Fade-resistant, UV-protected polyester fabric
- Water-repellent coating
- Adjustable windshield strap provides a custom windshield/mirror fit
- Adjustable hook-and-loop front fasteners
- Easy-access, zippered gas cap panel
- 4 cinch-down side straps
- Trailerable

8639-329 | '12-'24 M; Riot X; XF High Country; King Cat 141-165"
(EXCEPT '24 600) **BEST SELLER**

8639-328 | '12-'24 F, ZR, Thundercat, XF 129-137" (EXCEPT '24 600)

8639-330 | '15-'24 Pantera 3/6/7000 146"



CANVAS COVERS

- Excellent longevity from specially treated canvas
- Adjustable windshield strap provides a custom windshield/mirror fit (not included on 2-up Touring models)
- 4 cinch-down side straps
- Adjustable hook-and-loop front fasteners
- Easy-access, zippered gas cap panel
- Trailerable
- Fits low, mid and high windshields and mirrors

8639-001 | '12-'24 F, ZR, Thundercat, XF 129-137" (Except '24 600) **BEST SELLER**

8639-003 | '12-'24 M; Riot X; XF High Country; King Cat 141-165" (Except '24 600) **BEST SELLER**

8639-150 | '20-'24 Riot; (EXCEPT '24 600) '20 Riot X 146"

8639-360 | '21-'24 BLAST ZR

8639-361 | '21-'24 BLAST M, LT, XR

8639-362 | '22-'24 XR Touring; '21-'24 BLAST LT, XR 146" With Passenger Seat

8639-006 | '15-'24 Pantera 3/6/7000 146"

8639-002 | '12-'24 F, ZR, Thundercat, XF 129-141" With Passenger Seat (Except '24 600)

8639-008 | '18-'24 Norseman; '16-'17 Bearcat 3000 LT 146-154"

8639-152 | '18-'23 Norseman With Passenger Seat



CUSTOM CANVAS COVERS

- Custom-fit options for non-current sled models
- Excellent longevity from specially treated canvas
- Cinch-down side attachments
- Adjustable hook-and-loop front fasteners
- Easy-access, zippered gas cap panel
- Trailerable

8639-004 | '15-'20 Lynx; '12-'14 F5, F570; '07-'11 F; '09-'11 Z1

8639-005 | '15-'20 Lynx LT; '15-'18 Bearcat LT 2000; '08-'14 T570, TZ1; '09-'14 Bearcat 570

8639-007 | '16-'19 Pantera 7000 XT LTD

8639-010 | '16-'19 Bearcat 7000 XT

7639-998 | '15-'20 Bearcat 2000 XT; '09-'15 XT

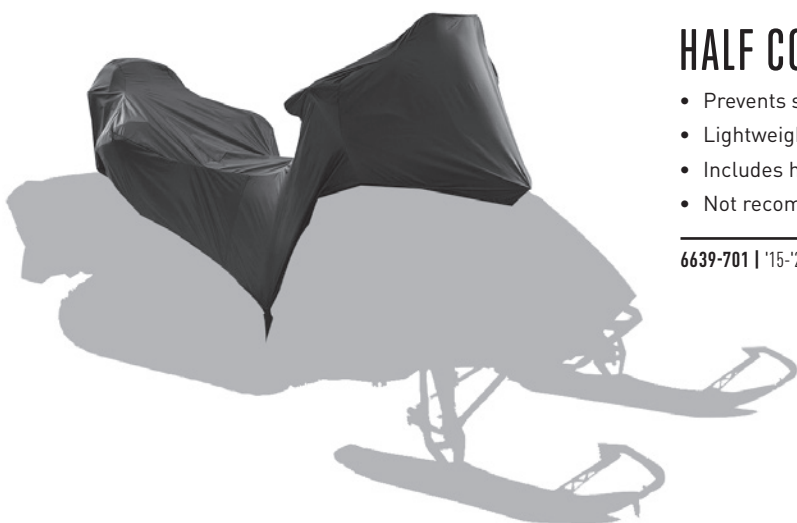
5639-017 | '03-'06 Firecat, Sabercat 128"

5639-018 | '99-'06 Z, ZL, ZR, ZRT, Thundercat, T660 121"

6639-044 | '06-'11 Crossfire; '06-'07 M 136-141"

5639-241 | '05-'11 M 153-162"

5639-020 | '00-'06 Panther, Pantera, T660 2-Up Touring



HALF COVER

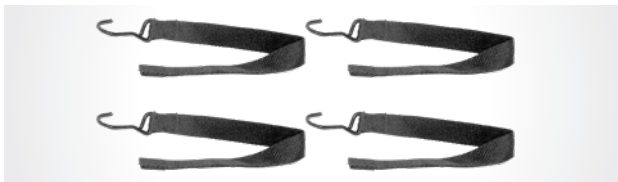
- Prevents snow buildup on seat and dash
- Lightweight and ideal for overnight trips
- Includes hooks to attach to running boards
- Not recommended for trailering

6639-701 | '15-'24 Pantera 3/6/7000 146"



PREMIUM COVER CLIP & STRAP

1641-479 | FITS COVERS WITH PLASTIC CINCH STRAPS



COVER HOOK & STRAP (4-PACK)

0636-527 | FITS COVERS WITH FABRIC CINCH STRAPS



RATCHET TIE-DOWNS

- Secure sled to your trailer with heavy-duty nylon straps
- Spring-loaded retainer clips prevent S-hooks from falling off
- Comfortable ratchet-handle grip for easy operation
- 1.125" X 102" strap features Arctic Cat logos and 1,200-lb. load rating
- Sold in pairs

7639-183 | Universal



EZ WHEELZ

- Move your sled around the garage or load and unload your trailer with ease
- Protects carbides and driving surface from damage and provides full steering control
- Premium stainless steel and aluminum construction
- 10" airless tires with sealed ball bearings for unmatched durability and long life
- Install or remove in seconds without tools or permanent hardware
- Sold in pairs, no assembly required

8639-550 | Universal '12-'24



WINDSHIELDS



FEATURED ON SLED:
8639-077 MID TOURING WINDSCREEN - MEDIUM GREEN
7639-342 SPEEDRACK BASE KIT
8639-178 SPEEDRACK GEAR BAG

FIND THE PERFECT WINDSHIELD TO MATCH YOUR STYLE OF RIDING.

PERFORMANCE RIDERS : A low windshield is right for you. The low cut will be more aerodynamic, and if you roll your sled, the chances of your windshield getting caught and breaking are reduced.

EXTREME LOW



2.5"

LOW SNO PRO



5"

MID PERFORMANCE



12"

TOURING AND LONG DISTANCE RIDERS:

A tall snowmobile windshield will be perfect to keep you warm and protected from the wind.

MID TOURING



15"

HIGH TOURING



18"



EXTREME LOW

- 2.5" High x 16" Wide
- Accepts Hand Guards

7639-692 BLACK | '18-'24 8000; '18-'23 6000; '17-'24 9000; '14-'24 7000; '17-'19 3000 Models



LOW SNO PRO®

- 5" High x 20" Wide
- Accepts Hand Guards

7639-696 BLACK | '18-'24 8000; '18-'23 6000; '17-'24 9000; '14-'24 7000; '17-'19 3000 Models

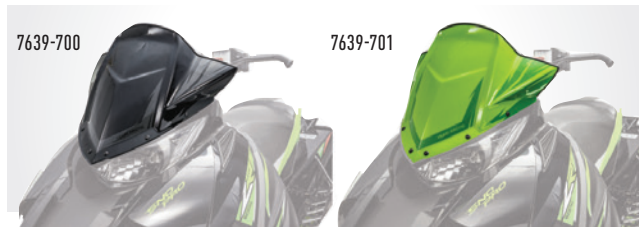
7639-607 WHITE | (Same application as 7639-696)



PRO MTN

- Unique design acts as a low-profile windshield while providing glove/goggle storage
- Semi-rigid construction holds its shape

7639-293 BLACK | '18-'24 8000; '18-'23 6000; '17-'24 9000; '14-'24 7000; '17-'19 3000 Models



MID PERFORMANCE

- 12" High x 21" Wide
- 7639-838 measures 10" High x 23" Wide
- Accepts Hand Guards

7639-700 BLACK | '18-'24 8000; '18-'23 6000; '17-'24 9000; '14-'24 7000; '17-'19 3000 Models

7639-701 MEDIUM GREEN | (Same application as 7639-700)

8639-220 HYPER GREEN | (Same application as 7639-700)

8639-221 ELECTRIC BLUE | (Same application as 7639-700)



XC

- Shaped to the unique demands of terrain racing, this windshield offers ample wind protection in a slim, aggressive shape
- 14" High x 18" Wide

7639-913 BLACK | '14-'24 7/8/9000; '14-'23 6000; '14-'17 4/5000; '16-'19 3000; '12-'13 F, M, XF 800/1100; '12-'14 Sno Pro 600 **NEW**



MID TOURING

CATALYST

- 12" High x 24" Wide
- No-drill auxiliary fastener installation

8639-520 | '24 ZR, Riot, M 600 **NEW**



HIGH TOURING CATALYST

- 17" High X 27" Wide
- No-drill auxiliary fastener installation
- Accepts 6639-770 Mirrors

8639-521 | '24 ZR, Riot, M 600 **NEW**



LOW SNO PRO CATALYST

- 5" High x 20" Wide
- Accepts Hand Guards

1616-245 BLACK | '24 ZR, Riot, M 600 **NEW**

1616-428 MEDIUM | (Same application as 1616-245) **NEW**



MID LXR

- 13" High X 27" Wide

NOTE: Handlebar riser may need adjustment to provide clearance between hand guards and the windshield

8639-134 BLACK | '18-'24 8000; '18-'23 6000; '17-'24 9000; '14-'24 7000; '17-'19 3000 Models

8639-135 MEDIUM GREEN | (Same application as 8639-134)

8639-077



MID TOURING

- 15" High x 27" Wide
- Accepts 6639-630, 6639-770 Mirrors

7639-688 BLACK | '18-'24 8000; '18-'23 6000; '17-'24 9000; '14-'24 7000; '17-'19 3000 Models

BEST SELLER

8639-077 MEDIUM GREEN | (Same application as 7639-688)

7639-368 BLACK | '14-'17 4/5/6/8000; '14-'16 9000; '12-'13 800/1100 Models **BEST SELLER**



7639-383

HIGH TOURING

- 7639-383, 7639-371 measure 18" High x 28" Wide, accept Mirrors 6639-630, 6639-770
- 1616-089 measures 16" High / 24" Wide

7639-383 BLACK | '18-'24 8000; '18-'23 6000; '17-'24 9000; '14-'24 7000; '17-'19 3000 Models **BEST SELLER**

7639-371 BLACK | '14-'17 4/5/6/8000; '14-'16 9000; '12-'13 800/1100 Models

1616-089 TINT | '21-'24 BLAST (All)



LOW SNO PRO

- Measures 4" High X 18" Wide
- Accepts Hand Guards

7606-555 | '21-'24 BLAST (All)



MID PERFORMANCE

- Measures 10" High X 23" Wide
- Accepts Hand Guards

8639-504 | '21-'24 BLAST (All) **NEW**



WINDSHIELD DART

667790 | Mid Touring; High Touring; Pro Mtn Windshield



WINDSHIELD RETAINER

2606-853 | '15-'19 Pantera, Bearcat 3/7000 High Touring Windshield

WINDSHIELD HARDWARE KIT

- Includes replacement LH + RH molded retainers and fasteners

8639-148 | Catalyst Mid & High Touring Windshields **NEW**

BAGS & STORAGE



FEATURED ON SLED:
8639-363 TRAIL PACK




ATCH

ACCESSORY LATCHING SYSTEM

CONNECT YOUR ACCESSORIES IN A SNAP




Add and remove accessories on your sled in seconds, revolutionizing how you customize your ride. This rugged, high-strength composite design is suited for the harshest conditions and requires no modification, fasteners or tools. With ATACH, it doesn't matter if you're in the showroom, at home or out on the trail – it's easier than ever to configure accessories.



HOW TO INSTALL

- Open the dust covers, if equipped
- Set the accessory over the desired mounting location and drop the interlocking features into place
- Slide the accessory forward until both sides click into position, securing it to the vehicle
- If utilized, use the provided key in the lock to prevent theft

HOW TO REMOVE

- Unlock with the provided key to disable theft-prevention
 - Press and hold the button on both sides and slide the accessory rearward
 - Lift the accessory from the vehicle
 - Replace the dust covers, if equipped
- 



ATACH HIGH COUNTRY PACK

- Ultimate technical riding bag with a low profile and optimized features for the backcountry
- Exclusive ATACH technology allows install and removal in seconds without tools, includes 1 lock and 2 keys for extra security
- Lid stores most shovels fully assembled and doubles as a detachable utility tray
- Semi-rigid construction with premium materials, waterproof interior pockets, glove-friendly buckles, and anti-icing zippers keep contents safe and accessible in the harshest conditions
- 21-liter capacity
- **NOTE:** *Avalanche experts recommend carrying a shovel in your backpack and a second shovel on the sled*

8639-499 21L | '24 ZR, Riot, M 600; ATACH Base Kit **NEW**



ATACH SADDLEBAGS

- Designed specifically for the Catalyst platform, these saddlebags offer extra carrying capacity for big adventures
 - Exclusive ATACH technology allows install and removal in seconds without tools
- NOTE:** *Secured to vehicle with another ATACH accessory or ATACH Latch Kit (Sold separately). Not compatible with accessory running boards*
- Semi-rigid construction with premium materials, glove-friendly buckles, and anti-icing zippers keep contents safe and accessible in the harshest conditions
 - 11-liter capacity each (Sold in pairs)

8639-500 22L | '24 ZR, Riot, M 600 **NEW**



ATACH TUNNEL PACK

- Robust, all-purpose bags to bring essential gear with you
- Exclusive ATACH technology allows install and removal in seconds without tools, includes 1 lock and 2 keys for extra security
- Semi-rigid construction with premium materials, glove-friendly buckles, and anti-icing zippers keep contents safe and accessible in the harshest conditions
- 14-liter, [8639-496] 22-liter [8639-497] capacity

8639-496 14L | '24 ZR, Riot, M 600; ATACH Base Kit **NEW**

8639-497 22L | '24 ZR, Riot, M 600; ATACH Base Kit **NEW**



ATACH CATALYST PACK

- Designed specifically for the Catalyst platform, this bag combines roomy storage and a sleek appearance
- Exclusive ATACH technology allows install and removal in seconds without tools, includes 1 lock and 2 keys for extra security
- Semi-rigid construction with premium materials and anti-icing zippers keep contents safe and accessible in the harshest conditions
- 17-liter capacity

8639-498 17L | '24 ZR, Riot, M 600 **NEW**



ATACH BASE KIT

- The ATACH accessory mounting system brings unparalleled convenience and security to the riding experience
- Constructed from durable, high-strength composite materials to function reliably in any environment
- Includes 2 base plates, 2 dust covers, hardware, and instructions

8639-506 | '13-'24 F, ZR; Thundercat; Riot; M; XF Models (Except '24 600) **NEW**



TRAIL PACK

- Durable and stylish bags provide easy-access storage for the long-distance touring rider
- Semi-rigid construction
- Includes cam-lock or strap-and-hook attachments
- Available in two sizes; Mid fits 129-137" models, Large fits 137" models
- 27-liter, [8639-029] 33-liter, [8939-030] 18.5-liter [8639-363] capacity

8639-029 MEDIUM | '13-'24 F, ZR, Thundercat, Riot 129-146" (Except '24 600) **BEST SELLER**

8639-030 LARGE | '16-'24 ZR, Thundercat, Riot 137-146" (Except '24 600) **BEST SELLER**

8639-363 MEDIUM | '21-'24 BLAST (All) 121-146"



8639-033



8639-034

TUNNEL PACK

- Large capacity bags provide convenient, economical storage
- Strap-and-hook attachment fits most flat-tunnel models
- Available in two sizes; Mid fits 129" and 137" models, Large fits 137" models
- 20-liter, [8639-033] 30-liter [8639-034] capacity

8639-033 MEDIUM | '13-'24 F, ZR, Thundercat, Riot 129-146" (Except '24 600) **BEST SELLER**

8639-034 LARGE | '16-'24 ZR, Thundercat, Riot 137-146" (Except '24 600) **BEST SELLER**



TUNNEL GEAR BAG

- Large storage capacity
- Built-in cinch straps keep cargo secure
- Strap-and-hook attachment
- Measures 20" X 12" X 8"

6639-704 | '15-'20 Lynx; '12-'14 F5, F570; '07-'11 F; '09-'11 Z1



XL TUNNEL GEAR BAG

- Extra large, heavy-duty storage bag
- Semi-rigid construction with expandable top section
- Cam-lock attachment with quarter-turn lock system eliminates straps and hooks
- Measures 22" X 12" X 7"

7639-894 | '13-'24 F, ZR; Thundercat; Riot; M; XF Models (Except '24 600)



MOUNTAIN SHOVEL PACK

- These rugged, low-profile bags offer easy-access storage and provide quick access to your shovel
- Semi-rigid construction
- Cam-lock attachment with quarter-turn lock system eliminates straps and hooks
- Accepts all BCA shovels
- Mid 17-liter, Large 28-liter capacity

NOTE: Avalanche experts recommend carrying a shovel in your backpack and a second shovel on the sled

8639-031 MEDIUM | '12-'24 M, Riot, (Except '24 600) BLAST M, XF High Country; King Cat 141-165" **BEST SELLER**

8639-032 LARGE | Same application as 8639-031



MOUNTAIN PACK

- Tunnel storage bags specialized for the mountains
- Sleek, compression-molded construction to shed snow
- Cam-lock attachment with quarter-turn lock system eliminates straps and hooks
- 7639-433 features removable lid, cargo dividers, and cinch straps to keep contents secure
- Large 18-liter, (22" X 15" X 6") Mid 14-liter (13" X 14" X 8") capacity

7639-433 LARGE | '10-'24 M; '21-'24 Riot, Riot X; (Except '24 600) '13-'19 XF Models

7639-432 MEDIUM | '10-'24 M; '21-'24 Riot, Riot X; (Except '24 600) '13-'19 XF Models



MOUNTAIN TUNNEL PACK

- Low-profile storage with adjustable straps and quick-attaching clips for simple removal
- Designed to fit models with short Mountain seat (Non-electric start)
- Measures 16" X 12" X 4"

6639-798 | '14-'24 M 8000; '14-'23 M 6000 (Except ES Models)



WINDSHIELD BAG

- Offers out-of-the-way storage for smaller items
- Fits neatly behind windshield

7639-691 | '18-'24 8000; '18-'23 6000; '17-'24 9000; '14-'24 7000; '17-'19 3000 Models

7639-289 | '14-'17 4/5/6/8000; '14-'16 9000; '12-'13 F, M, XF 800/1100



DASH CADDY

- Dash storage with sturdy polyethylene construction
- Compartment door features a foam seal to keep contents safe and dry
- Not compatible with Mid Performance windshield

8639-219 | '18-'24 8000; '18-'23 6000; '17-'24 9000; '14-'24 7000; '17-'19 3000 Models



HANDLEBAR BAG

- Easy-access storage
- Convenient hook-and-loop attachment

8639-185 | '07-'24 Models With Trail Handlebar **BEST SELLER**

8639-186 | '05-'24 Models With MTN Handlebar

8639-364 | '21-'24 BLAST (ALL)



PANTERA HANDLEBAR BAG

- Easy-access storage
- Convenient hook-and-loop attachment

6639-715 | '15-'24 Pantera 3/6/7000



CUSTOM HANDLEBAR BAG

- Lightweight storage for any sled

6639-716 | Universal



TANK BAG

- Convenient, easy-access storage
- Easily removes for refueling
- Large map window

7639-287 | '12-'24 M, Riot, ZR, Thundercat, XF, F (Except '24 600)



HEATED GOGGLE BAG

- Engine heat dries goggles, masks or gloves while you ride
NOTE: Do not leave goggles in holder for extended periods; heat may damage goggles.

7639-591 | '18-'24 8000; '18-'23 6000; '17-'24 9000 Models

5639-767 | '14-'17 4/5/6/8000; '14-'24 7000; '17-'19 3000; '14-'16 9000; '12-'13 F, M, XF 800/1100 Models **BEST SELLER**

8639-366 | '21-'24 BLAST (All)



CARGO BAG

- Large main storage area
- Quick-attach mounting straps

7639-764 | '18-'24 Norseman; '16-'17 Bearcat 3000 LT 146-154"



TUNNEL CARGO BAG WITH SADDLEBAGS

- Extra storage capacity tunnel bag with attached saddlebags
- 20 x 12 x 5" center compartment
- 21 x 10 x 5" saddlebags (Each)

7639-286 | '14-'24 ZR; (Except '24 600) '12-'15 XF; (Except High Country, Cross Country, CrossTour) '12-'13 F Models



HARD SADDLEBAGS

- Premium injection-molded saddlebags provide clean, lockable storage
- Features large-capacity storage and quick-release attachment
- Includes right and left-side bags, each measures 21" X 10" X 8"

7639-568 | '15-'24 Pantera 3/6/7000; '16-'18 XF CrossTour 6/7/9000

SPEEDRACK® II SYSTEM

- A simple, fast and strong accessory attachment system with accessories that can be added or removed in seconds
- Attach in two easy steps:
 1. Position the accessory,
 2. Insert SpeedLock™ and press down thumb lock



SPEEDRACK BASE KIT

- SpeedRack Base attaches to the tunnel to provide the mount for SpeedRack accessories
- Includes front and rear SpeedRack base mounts and one SpeedLock

7639-342 | Universal '13-'24 (Except '24 600 Models; '20 Riot; '17-'19 XF Cross Country; Pantera; Crosstour)



SPEEDRACK GEAR BAG

- Compact storage bag attaches to SpeedRack Base
- Required SpeedLock is included in SpeedRack Base Kit
- 20-liter capacity

8639-178 | WORKS WITH SPEEDRACK BASE KIT



SPEEDRACK GEAR RACK

- Lightweight aluminum rack provides capacity and tiedown points for cargo
- Attaches to SpeedRack Base Kit
- Required SpeedLock is included in SpeedRack Base Kit
- 10" L x 11" W

7639-344 BLACK | WORKS WITH SPEEDRACK BASE KIT

7639-345 TEAM ARCTIC GREEN | WORKS WITH SPEEDRACK BASE KIT

7639-346 ORANGE | WORKS WITH SPEEDRACK BASE KIT

7639-347 WHITE | WORKS WITH SPEEDRACK BASE KIT

7639-348 MEDIUM GREEN | WORKS WITH SPEEDRACK BASE KIT

7639-349 RED | WORKS WITH SPEEDRACK BASE KIT



SPEEDRACK CARGO BOX

- Durable molded polyethylene construction
- Removable lid with foam seal
- Built-in cinch strap keeps cargo secure
- Attaches to SpeedRack Base
- Required SpeedLock is included in SpeedRack Base Kit
- 20" L x 12" W x 10" H, 25-liter capacity

7639-351 | WORKS WITH SPEEDRACK BASE KIT



SPEEDRACK CARGO RACK

- Tubular steel rack provides added storage capacity
- Attaches to SpeedRack Base Kit
- Required SpeedLock is included in SpeedRack Base Kit
- 13" L x 15" W

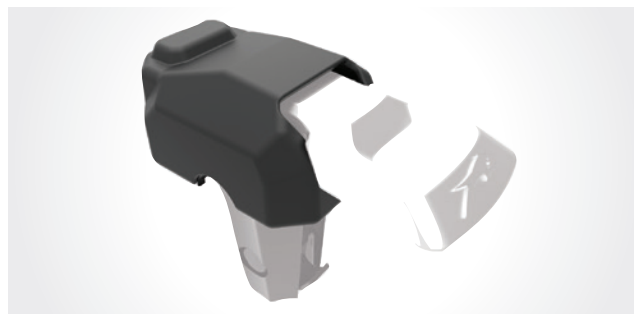
7639-350 | WORKS WITH SPEEDRACK BASE KIT



SPEEDLOCK

- Drop-in system quickly attaches with easy-to-use thumb locks
- Durable cast-aluminum components with one-click unlocking for fast removal

2436-501 | WORKS WITH SPEEDRACK BASE KIT



SPEEDLOCK COVER

- Slip-on rubber cover retains mechanical mobility of SpeedLock in wet, slushy conditions

2436-540 | WORKS WITH SPEEDLOCK



TUNNEL RACK

- Slim, stylish, powder-coated aluminum rack
- Tunnel Reinforcement Kit (M models) recommended for large loads
- 11" L x 14" W

7639-336 BLACK | Universal (Flat-Top Tunnel)

7639-337 TEAM ARCTIC GREEN | Universal (Flat-Top Tunnel)

7639-338 ORANGE | Universal (Flat-Top Tunnel)

7639-339 WHITE | Universal (Flat-Top Tunnel)



BILLET TUNNEL RACK

- Durable billet aluminum with anodized finish
- Includes extensions to customize width
- Tunnel Reinforcement Kit (M models) recommended for large loads
- 7.75" L x 12.25-14" W x 2.5" H

8639-056 BLACK | Universal (Flat-Top Tunnel)

8639-057 GRAY | Universal (Flat-Top Tunnel)

8639-058 PURPLE | Universal (Flat-Top Tunnel)

8639-230 BRONZE | Universal (Flat-Top Tunnel)



LOW PROFILE TUNNEL RACK

- Stylish, lightweight, powder-coated aluminum
- Tunnel Reinforcement Kit (M models) recommended for large loads
- 8" L x 14" W

8639-059 BLACK | '14-'23 ZR, Thundercat 137"; '12-'23 M; '21-'23 BLAST ZR, M, XR; '12-'19 XF HIGH COUNTRY; '13-'16 XF

8639-060 MEDIUM GREEN | Same application as 8639-059

8639-062 ORANGE | Same application as 8639-059

8639-063 PURPLE | Same application as 8639-059

8639-237 ELECTRIC BLUE | Same application as 8639-059

8639-166 ALUMINUM | Same application as 8639-059



TUNNEL PAD

- Protects the top of the tunnel when carrying cargo
- Adhesive attachment

7639-997 | Universal (Except '24 600 Models)



RACK STRAP

- Strong, heavy-duty nylon straps
- Quick-release buckle
- Easily secure gear and fuel cans

7639-463 | Universal

BUMPERS

FEATURED ON SLED:
8639-516 EVO FRONT BUMPER - SKYE BLUE



EVO BUMPER

- Single-piece front bumper provides rigid protection from obstacles and a custom appearance
- High-strength, lightweight aluminum construction features extruded tubes and rugged center bash plate
- Durable, factory-matched powder-coat finish
- 2.6 lbs

8639-514 MEDIUM GREEN | '24 ZR, Riot, M 600 **NEW**

8639-515 FIRE RED | Same application as 8639-514 **NEW**

8639-516 SKYE BLUE | Same application as 8639-514 **NEW**



PRO BUMPER

- Aluminum bumper provides added protection
- Durable factory-matched powder-coat finish
- 4.5 lbs

8639-400 GEN 2 BLACK | '18-'24 8000; '18-'23 6000; '21-'24 4000; '19-'24 7000; '19 3000 **BEST SELLER**

8639-401 GEN 2 MEDIUM GREEN | (Same application as 8639-400)

8639-402 GEN 2 HYPER GREEN | (Same application as 8639-400)

7639-301 GEN 2 BLACK | '17-'24 9000

7639-302 GEN 2 TEAM ARCTIC GREEN | Same application as 7639-301

6639-724 GEN 1 BLACK | '14-'17 4/5/6/8000; '14-'18 3/7000; '14-'16 9000; '12-13 800/1100

6639-723 GEN 1 ALUMINUM | Same application as 6639-724 **NEW**



PRO MTN BUMPER

- Lightweight aluminum bumper with a stylish, aggressive design
- Open design minimizes snow buildup
- Durable factory-matched powder-coat finish
- 3.0 lbs

8639-197 GEN 2 BLACK | '18-'24 8000; '18-'23 6000; '19-'24 7000; '19 3000 **BEST SELLER**

8639-189 GEN 2 MEDIUM GREEN | (Same application as 8639-197)

8639-190 GEN 2 HYPER GREEN | (Same application as 8639-197)

8639-192 GEN 2 ORANGE | (Same application as 8639-197)

8639-196 GEN 2 FIRE RED | (Same application as 8639-197)

7639-308 GEN 1 BLACK | '14-'17 4/5/6/8000; '14-'18 3/7000; '14-'16 9000; '12-13 800/1100

7639-307 GEN 1 ALUMINUM | (Same application as 7639-308)



PROCLIMB™ BUMPER

- Large-diameter top tube provides added protection
- Open-tube design lets snow drop through
- Durable factory-matched powder-coat finish
- 3.5 lbs

8639-405 GEN 2 BLACK | '18-'23 6/8000; '21-'23 4000; '19 3/7000 **BEST SELLER**

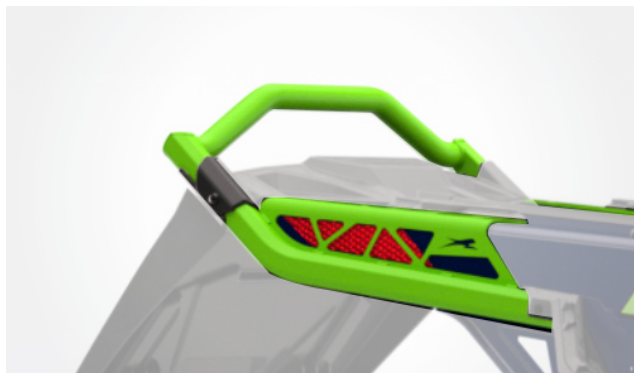
8639-390 GEN 2 BLACK TEXTURED | (Same application as 8639-405)

8639-406 GEN 2 MEDIUM GREEN | (Same application as 8639-405)

8639-407 GEN 2 HYPER GREEN | (Same application as 8639-405)

8639-409 GEN 2 FIRE RED | (Same application as 8639-405)

6639-286 GEN 1 BLACK | '14-'17 4/5/6/8000; '14-'18 3/7000; '14-'16 9000; '12-13 800/1100



EVO REAR BUMPER

- Single-piece rear bumper provides improved ergonomics, enhanced chassis stiffness, and a custom appearance
- High-strength, lightweight aluminum construction features extruded tubes and contoured reinforcement plates
- Rear grab handle optimized for accessibility and minimal drag in deep snow
- Durable, factory-matched powder-coat finish
- Accepts factory or accessory running boards

8639-517 MEDIUM GREEN | '24 ZR 600 129", M 600 146" **NEW**

8639-495 SKYE BLUE | (Same application as 8639-517) **NEW**

8639-518 MEDIUM GREEN | '24 ZR 600 137", M 600 154" **NEW**

8639-483 SKYE BLUE | (Same application as 8639-518) **NEW**

8639-519 FIRE RED | '24 Riot 600 **NEW**

8639-484 SKYE BLUE | (Same application as 8639-519)



PROCROSS™ REAR BUMPER

- Rugged, 3-piece aluminum bumper features stylish side plates and tubular grab handle for ergonomic function
- Durable powder-coat finish

7639-316 BLACK | '13-'23 F, ZR 129"

7639-317 TEAM ARCTIC GREEN | (Same application as 7639-316)

7639-318 ORANGE | (Same application as 7639-316)

7639-319 WHITE | (Same application as 7639-316)

7639-320 MEDIUM GREEN | (Same application as 7639-316)

7639-323 BLACK | '18-'24 ZR, XF 6/7/8000; '17-'24 ZR, XF 9000 137" (Except '24 600)

7639-324 TEAM ARCTIC GREEN | (Same application as 7639-323)

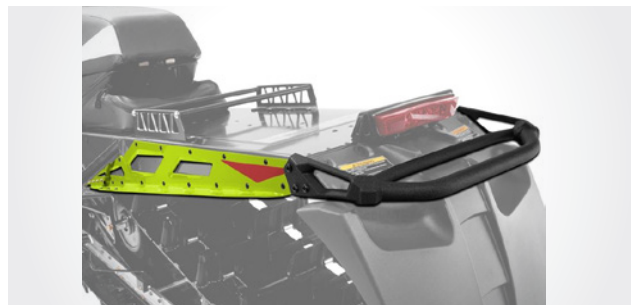
7639-325 ORANGE | (Same application as 7639-323)

7639-326 WHITE | (Same application as 7639-323)

7639-331 TEAM ARCTIC GREEN | '21-'24 Riot X; '16-'24 M 141-146"; '13-'17 XF, '16-'19 XF High Country 137-141"; '16 ZR 137" (Except '24 600)

7639-332 ORANGE | (Same application as 7639-331)

7639-333 WHITE | (Same application as 7639-331)



PRO MTN REAR BUMPER

- Rugged bumper features aluminum side plates and a tubular grab handle
- Embossed features add style and strength
- Durable powder-coat finish
- Accepts Pro MTN Running Boards
- 141-154", 4.5 lbs; 162-165", 5.2 lbs

8639-085 BLACK | '12-'24 M 153-154"; '20-'24 Riot; '20 Riot X; '17-'19 XF High Country 153"; '12-'15 XF High Country (Except '24 600)

8639-086 MEDIUM GREEN | (Same application as 8639-085)

8639-279 HYPER GREEN | (Same application as 8639-085)

8639-282 FIRE RED | (Same application as 8639-085)

8639-091 BLACK GLOSS | (Same application as 8639-085)

8639-092 MEDIUM GREEN | '12-'23 M, King Cat 162-165"

8639-286 HYPER GREEN | (Same application as 8639-092)

8639-289 FIRE RED | (Same application as 8639-092)



FEATURED ON SLED:
8639-510/FLEX-TEC LITE HAND GUARDS - BLACK
8639-476/ADJUSTABLE BAR RISER

BUILT FOR ADVENTURE

- Rugged design and glove-friendly touchscreen made for the toughest riding environments
- Preloaded topography, road, and land maps, compatible with trail maps
- Group Ride Radio features tracking for up to 20 riders
- Pair with compatible Bluetooth device for handsfree communication and enhanced features through the official Tread app
- Update device via Wi-Fi™
- No subscription needed

TREAD

PREMIUM GPS KIT

TREAD GPS KIT* - 3441-555

Includes: GPS, Group Ride Radio module + antenna + cable, universal mount, power cable, and user guide

STANDARD GPS KIT

TREAD GPS KIT - 3441-557

Includes: GPS, universal mount, power cable, and user guide



HYBRID

GPS INSTALL KIT - 8639-528 NEW

'24 ZR, RIOT, M 600

- « Mounts Tread in a neutral position ahead of the gauge for a clear view
- « Custom semi-rigid mount isolates screen from vibration and opens to access heated storage compartment below

Includes: GPS mount, power harness, antenna mount, and instructions

TRAIL

GPS INSTALL KIT - 8639-436

'18-'24 8000; '17-'24 9000; '14-'24 7000; '18-'23 6000; '17-'19 3000 MODELS

or

- « Mounts Tread above the gauge for superior visibility from a seated riding position
- « Custom housing protects all components, compatible with most windshields (Excludes Mid Performance and Pro MTN)

Includes: GPS console mount, power harness, hardware, and instructions

or

MOUNTAIN

GPS INSTALL KIT - 8639-435

'18-'24 8000; '17-'24 9000; '18-'23 6000 MODELS

- « Mounts Tread below the gauge for easy viewing from a standing riding position and protection from backcountry obstacles
- « Integrated heated storage bag for goggles, phone, or other items

Includes: GPS bag, power harness, antenna mount, and instructions



>> MOUNTAIN

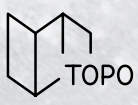
>> TRAIL

GARMIN™

>> Stay connected with Garmin™ Tread, the 5.5" navigator that is built to withstand the toughest terrains, temperatures, and weather.



Stay connected with the **Group Ride Radio*** featuring group tracking for up to 20 riders. Pair with Bluetooth for handsfree communication.



Get the lay of the land with **Preloaded Topographic** and street maps for North and South America.



High-resolution **Birdseye Satellite Imagery** can be downloaded directly to the device via Wi-Fi® connectivity. No subscription needed.



Built in altimeter, barometer, compass, pitch and roll gauges helps you navigate any challenging terrain.

FOR MORE TREAD FEATURES AND COMPLETE DETAILS, VISIT ARCTICCAT.COM OR A DEALER NEAR YOU. GARMIN - GARMIN IS A REGISTERED TRADEMARK OF GARMIN, INC. OR ITS SUBSIDIARIES

TOURING



Jaw dropping features mean faster turns,
easier rides, and fewer compromises.





WIND DEFLECTORS

- Lightweight, stylish deflectors add wind protection
- Sold as a pair, with right and left deflectors

7639-816 GEN 2 TRAIL | '18-'24 6/8000 (Except M, '21-'23 Riot X, '24 600); '17-'24 9000; '19-'24 7000; '19 3000 Models

6639-453 GEN 1 | '14-'17 4/5/6/8000; '14-'18 3/7000; '14-'16 9000; '12-'13 800/1100 Models



WINDSHIELD MIRRORS

- Mounts to the outside of the windshield
- 6639-630, 6639-770 fit accessory Mid Touring and High Touring windshields
- 6639-902 fits Mid LXR windshields
- Sold in pairs

6639-630 | ProCross Mid Touring & High Touring Windshields

6639-770 | ProCross & Catalyst Mid Touring & High Touring Windshields **BEST SELLER**

6639-902 | ProCross Mid LXR Windshields



HOOD-MOUNTED MIRRORS

- Mounts to the hood panel
- Adjustable shaft for optimum view
- Works with all production or accessory windshields
- Sold in pairs

8639-276 GEN 2 | '18-'24 8000; '18-'23 6000; '17-'24 9000; '21-'24 4000; '19-'24 7000; '19 3000 Models

5639-832 GEN 1 | '14-'17 4/5/6/8000; '14-'18 3/7000; '14-'16 9000; '12-'13 800/1100



COMPACT MIRROR

- Mounts to the inside of the windshield
- Sold individually

4639-565 | '15-'20 Lynx; '15-'18 Bearcat 2000; '12-'14 F5, F570; '07-'11 F; '08-'14 T570, Bearcat 570; '09-'11 Z1



HAND MIRROR

- Easy on/off with hook-and-loop strap

4992-810 | Universal **BEST SELLER**



ATACH PASSENGER SEAT

- Removes in seconds without tools
- Includes 1 lock and 2 keys for extra security
- Built-in storage box
- Includes passenger seat with backrest, handholds, tunnel reinforcements and wind deflectors
- Passenger hand warmers, heated seat, and heated shield outlet included with heated option

8639-501 STANDARD | '24 ZR, Riot, M 600 **NEW**

8639-502 HEATED | Same application as 8639-501 **NEW**



PASSENGER SEAT

- Share the riding experience in comfort and style
- Detachable base allows easy conversion from solo to 2-up riding and back again
- Includes passenger seat with backrest, handholds, tunnel mounts and footrests

NOTE: Riot, XF High Country, and Cross Country models with mountain seat require a compatible trail (ZR) seat

8639-217 | '13-'24 F, ZR, Riot, (See Note) XF (Except '24 600) **BEST SELLER**



PASSENGER SEAT

- Easily converts your sled to carry a passenger
- Includes passenger seat with backrest, handholds, tunnel mounts and footrests

8639-410 | '21-'24 BLAST LT, XR

7639-826 | '18-'24 Norseman (ALL); '16-'17 Bearcat LT 3000



PASSENGER SEAT

- Passenger seat with backrest, handholds and footrests
- Includes seat assembly and tunnel-mounted storage box

7639-833 | '18-'19 Bearcat 7000 XT



PASSENGER WIND DEFLECTORS

- Semi-rigid guards add style and protect passenger hands from the cold

8639-437 | '22-23 BLAST XR Touring; Passenger Seat 8639-410 (Replacement)



PASSENGER MUFFS

- Water- and wind-resistant nylon outer
- Easy-attach hook-and-loop straps
- Mounts with or without standard wind deflectors

7639-361 | '15-'24 Pantera; '15-'20 Lynx LT; '15-'18 Bearcat LT 2000; '08-'14 T570, TZ1; '09-'14 Bearcat 570

8639-177 | Fits Passenger Seat 8639-217

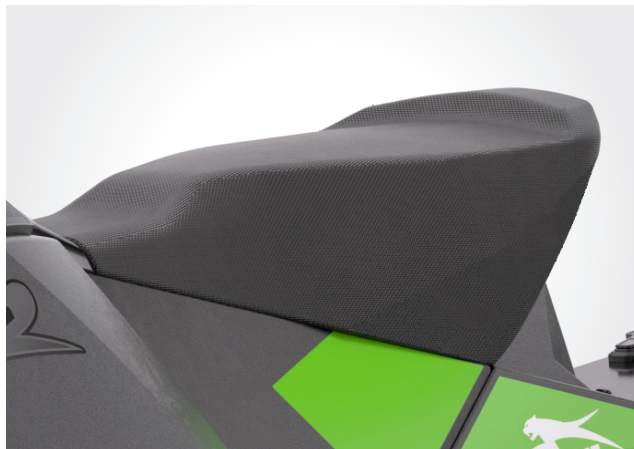


PASSENGER HAND WARMERS

- Increase 2-up rider comfort by adding passenger hand warmers
- Includes elements, (8639-217) wiring harness, passenger control switch, hardware, and instructions

8639-212 | Fits Passenger Seat 8639-217

8639-281 | Fits Passenger Seat 8639-410, 7639-826; BLAST XR Touring



HEATED SEAT

- Provides rider warmth and comfort
- Includes heating element and wiring
- 6/8000 models require LED headlight

8639-539 BLACK | '24 ZR, Riot, M 600 **NEW**



HEATED SEAT KITS

- Provides rider warmth and comfort
- Includes heating element and wiring
- 6/8000 models require LED headlight

7639-968 | '18-'24 8000, '18-'23 6000 Models with LED Headlight (EXCEPT M)

7639-965 | '18-'24 ZR 7000; '18-'19 ZR 3000; '18-'19 XF High Country 9000

7639-966 | '18-'19 Pantera 3000; '18 Pantera 7000



HEATED SHIELD OUTLET

- Dash-mounted outlet for heated shield

7639-041 | Universal '12-'24 **BEST SELLER**



HEATED SHIELD ADAPTER

- Quickly adapts a heated shield cord to the sled's accessory outlet

5639-645 | Universal



ELECTRIC START KITS

- Crank up your machine effortlessly with the turn of a key
- Includes starter components, ring gear, wiring harness, hardware, and battery

NOTE: M 8000 requires larger fuel tank and seat from ES model

8639-133 | '19-'24 8000 Models (8639-139 INTERNATIONAL W/O BATTERY)

7639-846 | '18 8000 Models

7639-126 | '14-'17 8000; '12-'13 F, XF, M 800

(7639-132 INTERNATIONAL W/O BATTERY)

7639-501 | '14-'17 ZR 6000; '15-'17 M, XF High Country 6000

(7639-502 INTERNATIONAL W/O BATTERY)



UTILITY



OVERLOAD KITS

- Added spring tension to support 2-up riding
- Increased tow load pull and carry
- Quick engagement/disengagement

8639-378 | '21-'24 BLAST LT, XR

7639-978 | '19-'24 Norseman; '16-'18 XF CrossTour; '16-'17 Bearcat 3000; '14-'16 Bearcat XTE



HITCH KITS

CATALYST

- Sturdy steel draw bar kit allows confident towing with pivot or pintle-style hitch
- Installs below factory or accessory rear bumper
- Maximum tow rating 20 lbs vertical load, 150 lbs drawbar (pull)

8639-529 PIVOT | '24 ZR 600 129" **NEW**

8639-530 PINTLE | (Same application as 8639-529) **NEW**

8639-531 PIVOT | '24 ZR 600 137" (Except R XC), M 600 146 **NEW**

8639-532 PINTLE | (Same application as 8639-531) **NEW**

8639-533 PIVOT | '24 Riot 600, M 600 154" **NEW**

8639-534 PINTLE | (Same application as 8639-533) **NEW**



HITCH KITS

- Strong, secure steel bumper available with a pivot or pintle hitch
- 129-153" most kits include 8 mounting pockets
- Maximum tow rating 20 lbs vertical load, 150 lbs drawbar (pull)

7639-356 PIVOT | '18-'24 8000, '18-'23 6000, '19-'24 7000, '17-'24 9000 137"

7639-357 PINTLE | (Same application as 7639-356)

6639-991 PIVOT | '21-'24 Riot X; '16-'19 XF High Country, M 141"; '16-'17 5/6/8000, '16 9000, '16-'18 7000 XF CrossTrek, ZR 137"; '13-'15 XF 137-141"

6639-911 PINTLE | (Same application as 6639-991)

6639-992 PIVOT | '12-'24 M 153-154"; '20-'24 Riot; '20 Riot X; '17-'19 XF High Country 153"; '13-'15 XF High Country (Except '24 600)

6639-912 PINTLE | (Same application as 6639-992)

6639-993 PIVOT | '12-'24 M 162-165"

6639-913 PIVOT | (Same application as 6639-993)

6639-061 PIVOT | '12 F 128"

4639-723 PIVOT | '15-'20 LYNX LT; '15-'18 Bearcat LT 2000; 2008-'14 T570, TZ1; 2009-'14 Bearcat 570



TOW HITCH

- Quick and easy installation
- Mounts to standard bumper
- For light-duty use

6639-541 PIVOT | '12-'24 M, Riot, ZR, Thundercat, XF, F (Except '24 600) **BEST SELLER**

8639-416 PIVOT | '18-'24 Norseman; '21-'24 BLAST; '15-'24 Pantera; '16-'18 XF CrossTour **BEST SELLER**

6639-740 PINTLE | (Same application as 8639-416)

5639-324 PIVOT | '15-'20 LYNX; '12-'14 F5, F570; '09-'11 CF, CFR, M; '10-'11 F, Z1



TOW STRAP

- Safe, easy towing with even weight distribution
- Durable nylon strap
- Handy storage pouch included
- For towing disabled vehicle, never use to tow or transport people; use a solid hitch when towing or transporting people

4639-247 | Universal



TOW ROPE

- Easy-attach spring-clip buckles
- Heavy-duty nylon rope
- For towing disabled vehicle, never use to tow or transport people; use a solid hitch when towing or transporting people

0636-577 | Universal

HANDLEBARS



FEATURED ON SLED:
8639-186/MTN HANDLEBAR BAG



FLEX-TEC LITE HAND GUARDS

- Legendary protection with a slender gauntlet profile optimized for backcountry riding
- Flexible backbone design
- Models with mountain handlebars require trimming
- Sold in pairs
- Includes machined aluminum mounts

8639-510 BLACK | '07-'24 Trail Handlebar, '12-'24 MTN Handlebar Models **NEW**

8639-511 SKYE BLUE | (Same application as 8639-510) **NEW**

8639-512 FIRE RED | (Same application as 8639-510) **NEW**



FLEX-TEC HAND GUARDS

- Handles the toughest conditions while keeping your hands warm and protected
- Flexible backbone design
- Models with mountain handlebars require trimming
- Sold in pairs
- Includes machined aluminum mounts

8639-467 GEN 3 BLACK | '07-'24 Trail Handlebar, '12-'24 MTN Handlebar Models

8639-468 GEN 3 WHITE | (Same application as 8639-467)

8639-469 GEN 3 MEDIUM GREEN | (Same application as 8639-467)

8639-470 GEN 3 ORANGE | (Same application as 8639-467)

8639-048 GEN 2 PURPLE | (Same application as 8639-467)

REPLACEMENT PARTS

1641-488 PLASTIC STIFFENER (PAIR) | Flex-Tec Hand Guards

1641-489 MOUNT ASSEMBLY (PAIR) | Flex-Tec Hand Guards

1641-108 HARDWARE KIT | Flex-Tec Hand Guards

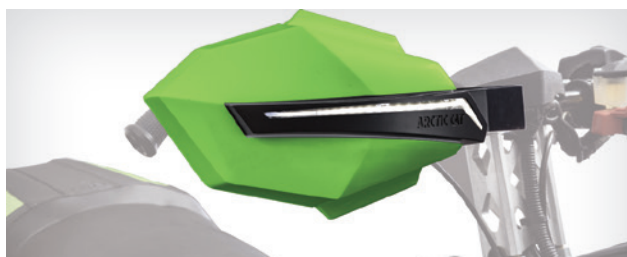


PROCROSS HAND GUARDS

- Stylish, injection-molded guards add style and protection
- Models with mountain handlebars require trimming
- Sold in pairs
- Includes nylon mounting arms

8639-352 BLACK | '07-'24 Trail Handlebar, '12-'24 MTN Handlebar Models

8639-353 MEDIUM GREEN | (Same application as 8639-352)



PROCROSS LIGHTED HAND GUARDS

- Stylish, injection-molded guards with LED accent lighting
- Lighted guards include LED caps and wiring
- Models with mountain handlebars require trimming
- Sold in pairs
- Includes nylon mounting arms

8639-354 BLACK | '07-'24 Trail Handlebar, '12-'24 MTN Handlebar Models

8639-355 MEDIUM GREEN | (Same application as 8639-354)

7639-449 WHITE | (Same application as 8639-354)



HAND GUARD LIGHT KIT

- Adds LED accent lighting to standard ProCross Hand Guards
- Includes LED caps and wiring
- Sold in pairs

8639-356 | ProCross Hand Guards



TEAM ARCTIC HAND GUARDS

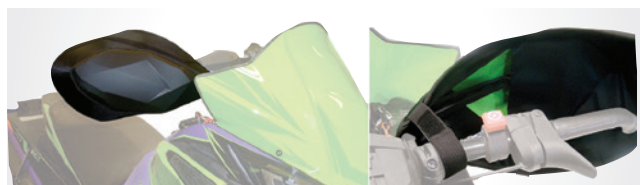
- Lightweight, injection-molded plastic guards add warmth and protection
- Models with mountain handlebars require trimming
- Sold in pairs
- Includes nylon mounting arms

8639-345 BLACK | '07-'24 Trail Handlebar, '12-'24 MTN Handlebar Models

8639-346 MEDIUM GREEN | (Same application as 8639-345)

8639-347 ORANGE | (Same application as 8639-345)

8639-348 WHITE | (Same application as 8639-345)



HAND GUARD EXTENSIONS

- Quick-attach guards add warmth and protection
- Sold in pairs

8639-176 | Fits Team Arctic Hand Guards



XC MUFFS

- Water and wind-resistant nylon outer with a quilted lining
- Rolls up on handlebar when not in use
- Easy-attach hook-and-loop straps with elastic grip straps

7639-995 | Universal **BEST SELLER**



TOURING MUFFS

- Water and wind-resistant nylon outer with a semi-rigid design
- Folds flat for storage
- Easy-attach hook-and-loop straps with elastic grip straps
- Clear insert for visibility of controls

8639-175 | Universal **BEST SELLER**



ADJUSTABLE BAR RISER

- Adjust handlebar position for any rider or conditions in seconds without tools
- Pull handle design is easy to use and provides 2.5" of telescoping height adjustment in 5/8" increments
- Custom billet and extruded aluminum construction for long-lasting durability
- Black powder-coat finish with machined accents

8639-476 4.5-7.0" | '12-'24 Models With Fixed Steering Post



BAR RISERS

- Strong extruded aluminum
- Black powder-coat finish

NOTE: Due to control cable and brake line restrictions, 7.5-in. and and 8.5" risers are recommended for M models only.

8639-337 2.0" | '12-'24 Models With Fixed Steering Post

8639-338 3.5" | (Same application as 8639-337)

8639-339 4.5" | (Same application as 8639-337)

8639-340 5.5" | (Same application as 8639-337)

8639-341 6.5" | (Same application as 8639-337)

8639-342 7.5" | (Same application as 8639-337)

8639-343 8.5" | (Same application as 8639-337)



LAYDOWN STEERING POST

- Converts M models with vertical steering to a fixed, laydown system
- Includes steering post and upper support
- Accepts standard bar riser; optional heights available separately

8639-136 | '14-'24 M (Except '24 600); '14-'19 XF High Country



FIXED VERTICAL STEERING POST

- Converts models with telescopic steering to a fixed post
- Includes upper steering post with a 4.5" riser block

7639-985 | '20 Riot X 8000; '14-'19 XF High Country 6/8000; '12-'15 M; '12-'13 XF High Country 800



MOUNTAIN HANDLEBAR

- Includes over-molded grab strap, grips and heating elements

7639-983 LIGHTWEIGHT (2 LBS) | '19-'24 M 6/8000 (All)

7639-984 HEAVY-DUTY (2.9 LBS) | (Same application as 7639-983)

7639-489 LIGHTWEIGHT (2 LBS) | '12-'18 M; '14-'18 XF High Country; '12-'15 XF

7639-490 HEAVY-DUTY (2.9 LBS) | (Same application as 7639-489)



RUFFIAN GRIPS

- Soft compound grips offer better shock absorption
- Includes two 8-in. grips, cut to length

5639-655 | Universal



PROCROSS GRIPS

- Slim, comfortable design
- Includes two 6.2" grips

7639-398 | Universal



GRIP-IT GLUE

- Specially formulated for applying hand grips to recreational vehicles
- Bonds up to 12 sets of grips

0441-510 1 OZ | Universal



HANDLEBAR SWITCH GUARDS

- Helps prevent accidental bumping of control switches
- Includes switch guard and adhesive

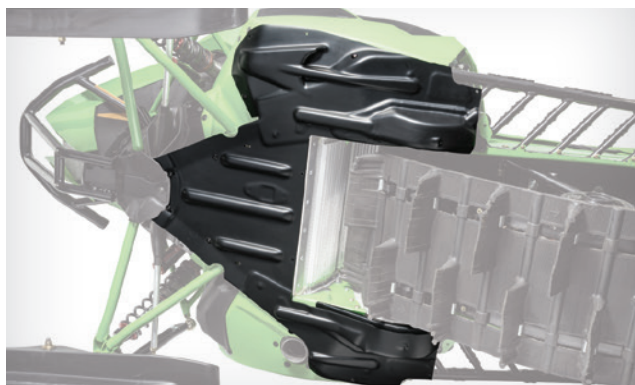
8639-097 | Universal '19-'24

5639-580 | Universal '07-'18

PROTECTION



FEATURED ON SLED:
8639-512/FLEX-TEC LITE HAND GUARDS - FIRE RED
8639-515/EVO FRONT BUMPER - FIRE RED
8639-496/ATACH 14L TUNNEL PACK
8639-519/EVO REAR BUMPER - FIRE RED



SKID PLATES

- Provides impact protection from A-arms to heat exchange
- Heavy-duty polyethylene protects vital components
- **NOTE: Some models require trimming around exhaust outlet.**

7639-676 BLACK | '18-'24 ZR, Norseman 6/8000; '20-'24 Riot 6/8000; '20 Riot X 8000; '18-'19 XF, Pantera 6/8000; '19 ZR, Norseman, Pantera 3000

8639-065 MEDIUM GREEN | (Same application as 7639-676)

8639-231 HYPER GREEN | (Same application as 7639-676)

7639-678 ORANGE | (Same application as 7639-676)

7639-421 BLACK | '17-'24 9000 (Except M, King Cat)

8639-427 BLACK | '18-'24 M 8000; '18-'20 M 6000; '21-'24 Riot X

8639-429 MEDIUM GREEN | (Same application as 8639-427)

8639-428 HYPER GREEN | (Same application as 8639-427)

7639-682 ORANGE | (Same application as 8639-427)

8639-389 BLACK | '21-'24 BLAST (All)

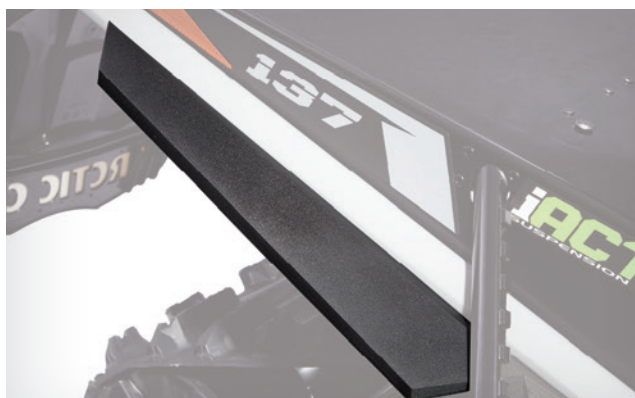
7639-684 BLACK | '17-'19 M, King Cat 9000

7639-425 BLACK | '17 Mountain Cat 8000

7639-720 BLACK | '14-'17 ZR, M, XF 4/5/6/8000; '14-'16 ZR, M, XF 9000; '13 F, M, XF 800/1100

7639-089 BLACK | '14-'18 ZR, XF, M, Pantera 7000

7639-090 TEAM ARCTIC GREEN | (Same application as 7639-089)



TUNNEL FLARES

- Deflects snow spray away from the rider
- Sold in pairs

7639-969 | '14-'24 ZR; '20-'24 Riot, Riot X; '12-'24 M; '12-'19 XF; '13 F (Except '24 600)



TANK PADS

- Provides comfort and grip
- Sold in pairs

7639-417 GEN 2 TRAIL | '18-'24 6/8000; '17-'24 9000; '19-'24 7000; '19 3000 (Except M, Blast (All), '21-'24 Riot X, '24 600)

7639-774 GEN 2 MTN | '18-'24 M 8000; '18-'20 M 6000; Blast (All); '21-'24 Riot X

7639-413 GEN 1 | '14-'17 4/5/6/8000; '14-'18 3/7000; '14-'16 9000; '12-'13 800/1100



SNOWFLAP

- Make your machine stand out with a custom color snow flap

6639-398 TEAM ARCTIC GREEN | '12-'24 M; '20-'24 Riot, Riot X; '14-'24 ZR; '13-'19 XF; '13 F (Except '24 600)

5639-843 ORANGE | '12-'24 M; '20-'24 Riot, Riot X; '14-'24 ZR; '13-'19 XF; '13 F (Except '24 600)



TWIN RAIL BRACE KIT

- Upgrade your twin-rail M suspension with full-length Hardcore braces for outstanding durability
- Total weight 7.5 lbs
- Includes braces, hardware, and instructions

8639-170 BLACK | '17-'19 M 153"

8639-171 ALUMINUM | (Same application as 8639-170)

7639-147 ALUMINUM | '16 M 153"



ALPHA ONE REAR ARM BOLT KIT

- Suspension upgrade for improved durability in harsh conditions
- Replaces two M6 cap screws with a through-bolt and lock nut

0637-535 | '19-'20 M ALPHA ONE 154-165"



TUNNEL REINFORCEMENT KIT

- Recommended when carrying fuel or heavy loads.
- Includes internal tunnel braces and hardware.
- Provides alignment holes for mounting Arctic Cat Tunnel Racks and Mountain Addiction Rails.

8639-210 | '14-'24 M 153-154"; '20-'24 Riot; '20 Riot X; '17-'19 XF High Country 153"
(Except '24 600)

8639-211 | '14-'24 M, King Cat 162-165"



TETHER SWITCH

- Stops engine in the event you fall off your sled
- Attaches to your jacket D-ring

8639-074 | '18 ZR, M, XF, Norseman 6/8000; '17 ZR 6000 RS **BEST SELLER**

8639-075 | '18 ZR, M, XF 9000

5639-859 | '14-'17 6/8000; '12-'13 800 **BEST SELLER**

5639-860 | '14-'17 5/9000; '14-'18 7000; '16-'18 3000; '12-'13 1100/1100T



EXTREME PROTECTION FOR THE TOUGHEST CONDITIONS



→ **This heavy-duty rail brace enhances the strength of the ALPHA ONE® Single-Beam Rear Suspension** for the most extreme riders.

At half the weight and twice the strength of billet, our braces withstand the gnarliest conditions the backcountry can dish out.

↗



ALPHA ONE RAIL BRACE - 8639-291

'19-'24 M ALPHA ONE 146-165"; '21-'24 Riot X, BLAST M

- » Weighs 1.2-pounds with rivets
- » Reinforces entire mid-section of suspension rail to resist bending
- » Includes RH and LH braces, steel HD rivets, and installation instructions

YOUTH



FEATURED ON SLED:
8639-513 FLEX-TEC HAND GUARDS - MEDIUM GREEN



COVER

- Custom-fit cover made from durable canvas
- Accepts low or high windshield
- Trailerable

8639-011 | '18-'24 ZR 200 **BEST SELLER**

8639-012 | '18-'24 ZR 200



HIGH WINDSHIELD

- Adds warmth and protection
- 10" high

7639-838 | '18-'24 ZR 120, 200



HANDLEBAR BAG

- Convenient, easy-attach storage

7639-715 | '18-'24 ZR 200



TUNNEL PACK

- Compact gear storage
- Quick-attach fasteners
- 16" L x 10" W x 4" H

7639-994 | '18-'24 ZR 200



TEAM ARCTIC HAND GUARDS

- Provides added hand protection
- Includes injection-molded guards and flexible nylon mounting brackets
- Sold in pairs

8639-213 BLACK | '18-'24 ZR 200 **BEST SELLER**

8639-067 MEDIUM GREEN | (Same application as 8639-213)

8639-068 WHITE | (Same application as 8639-213)



FLEX-TEC HAND GUARDS

- Adds style and warmth
- Flexible backbone design
- Sold in pairs
- Includes machined aluminum mounts

8639-513 GEN 3 MEDIUM GREEN | '18-'24 ZR 200 **NEW**

7639-911 GEN 2 MEDIUM GREEN | (Same application as 8639-513)

8639-245 GEN 2 FIRE RED | (Same application as 8639-513)

7639-912 GEN 2 PURPLE | (Same application as 7639-911)



SNOCROSS HANDLEBAR KIT

- Wider than stock handlebar with an adjustable height riser
- Five-position riser adjusts up to 4-in. higher than the standard bar
- Includes heavy-duty steering post, 27-in. wide handlebar, hand warmer elements and grips
- 8639-266 converts steering to '20 specification and includes longer tie-rods

8639-267 | '20-'24 ZR 200

8639-266 | '18-'19 ZR 200



HAND WARMERS

- Keep small riders comfortable by adding hand warmers
- Includes elements, wiring harness, and control switch

2639-019 | '01-'16 120 Models



RUNNING BOARD GRIPS

- Traction grippers provide added boot grip
- Includes aluminum foot grips and nylon edge-roll grips

7639-728 | '18-'24 ZR 200



TETHER SWITCH

- Stops engine in the event that you fall off your sled
- Attaches to your jacket D-ring

7639-732 | '18 ZR 200



SPEEDOMETER KIT

- Track your speed, mileage and RPM
- Includes speedometer/tachometer, speed sensor and mounts

7639-927 | '18-'24 ZR 200



HEAVY-DUTY SUSPENSION KIT

- Heavier suspension springs for larger riders
- 7639-887 includes ski shock and rear torsion springs
- 8639-208 includes rear torsion springs only

8639-208 | '18-'20 ZR 200 **BEST SELLER**

7639-887 | '18-'20 ZR 200



SPEEDWERX CLUTCH KITS

- Designed and calibrated for increased performance
- Includes springs, rollers and a custom helix

8639-121 | '18-'24 ZR 200 (Rider weight under 150 lbs)

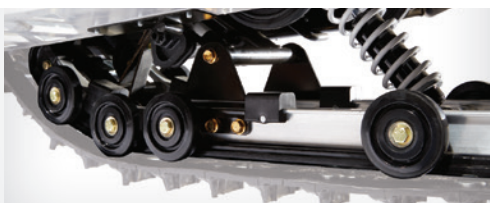
8639-125 | '18-'24 ZR 200 (Rider weight over 150 lbs)



ENGINE PERFORMANCE KIT

- Increase the power and responsiveness of your 120 engine
- Includes performance camshaft, valve springs, carburetor jets and gaskets
- Complies with ISR stock class racing rules

6639-883 | '14-'24 ZR 120; '10-'13 Sno Pro 120



SKID WHEEL KIT

- Adds wheels to the rear skid for use in low snow conditions
- Includes wheels and mounts

NOTE: Not recommended for summer use

7639-963 | '18-'24 ZR 200

7639-967 | '18-'24 ZR 120



ICE TRACK

- This track features 0.5" height lugs and is premarked for studs for riding or racing on ice
- Compatible with 7639-900 Traction Kit, 7639-971 Tunnel Protector Kit

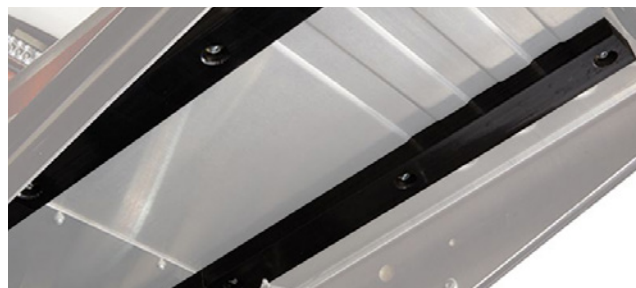
3602-220 | '18-'24 ZR 200



TRACTION KIT

- Designed specifically for use with 3602-220 Ice Track
- Requires 7639-971 Tunnel Protector Kit
- Includes studs, support plates, and nuts

7639-900 72/PK | '18-'24 ZR 200



TUNNEL PROTECTOR KIT

- Required when installing 7639-900 Traction Kit
- Includes tunnel protectors, mounting hardware, and instructions

7639-971 | '18-'24 ZR 200



CARBIDE WEARBARS

- Hardweld carbide wearbars provide excellent durability and steering control on hardpack snow and ice
- Sold in pairs

7639-889 4" CARBIDE | '18-'24 ZR 120, 200 **BEST SELLER**

7639-890 6" CARBIDE | '18-'24 ZR 120, 200

CROSSOVER



R

Carves the backcountry and zips trails with unbridled aggression.





PERFORMANCE



SHOCKS



FOX® ZERO QS3

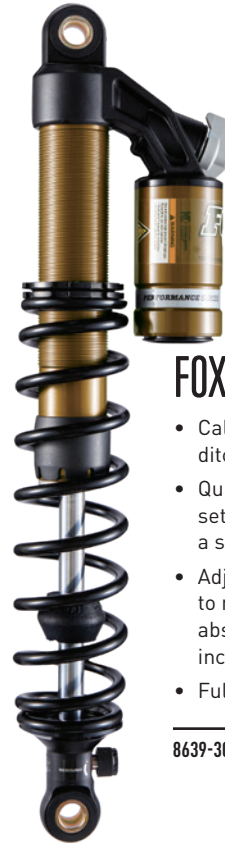
- Calibrated for aggressive trail riding and ditch banging
- Quickly change between 3 specifically calibrated settings (soft, medium and firm) with the flip of a switch to adapt to varying trail conditions
- Fully rebuildable and revalveable

8639-308 FRONT (PAIR) | '14-'24 ZR; '20-'24 Riot; '15-'24 Pantera; '12-'19 XF; '12-'13 F 42" (EXCEPT '24 600)

8639-319 REAR | '14-'23 ZR 129"

8639-320 REAR | '14-'24 ZR; '17-'24 Thundercat; '14-'19 XF 137"

8639-323 REAR | '20-'24 RIOT; '20 Riot X 146"



FOX ZERO QS3R

- Calibrated for aggressive trail riding and ditch banging
- Quickly change between 3 specifically calibrated settings , soft, medium and firm, with the flip of a switch to adapt to varying trail conditions
- Adjustable rebound setting allows your shock to recover from bigger hits quickly enough to absorb consecutive hits and provides increased traction
- Fully rebuildable and revalveable

8639-309 FRONT (PAIR) | '14-'24 ZR; '20-'24 Riot; '15-'19 Pantera; '12-'19 XF; '12-'13 F 42" (Except '24 600)



ARCTIC CAT IFP

- Soft calibration for comfortable trail riding
- An affordable upgrade for models with hydraulic twin tube shocks
- Fully rebuildable and revalveable

8639-306 FRONT | '14-'24 ZR; '20-'24 Riot; '18-'19 Pantera; '12-'19 XF; '12-'13 F 42" 6/8000 (Except '24 600)

8639-307 FRONT | '14-'24 ZR; '23-'24 Riot; '15-'24 Pantera; '12-'19 XF; '12-'13 F 42" 3/7/9000

8639-317 FRONT | '14-'23 ZR 129"

8639-318 FRONT | '14-'24 ZR; '17-'24 Thundercat; '14-'19 XF 137"

ARCTIC CAT IFP PACKAGES

- Upgraded suspension package offers improved ride and consistent performance over bumpy terrain
- Internal Floating Piston (IFP) gas shocks feature adjustable preload and are fully rebuildable and revalveable
- Includes (4) shocks and Instructions

8639-485 | '21-'24 BLAST ZR

8639-487 | '21-'23 BLAST M (Except '23 BLAST M LTD)

8639-486 | '22-'24 BLAST XR; '21-'24 BLAST LT



FOX FLOAT® 3 QSL

- Calibrated for mountain performance riding
- Quickly change between 2 specifically calibrated settings and a third position climb lockout function
- Infinitely adjustable air spring
- Fully rebuildable and revalveable

8639-325 REAR | '16-'19 M 153, 162"

FOX FLOAT QS3

- Calibrated for mountain performance riding
- Quickly change between 3 specifically calibrated settings (soft, medium and firm) with the flip of a switch to adapt to varying conditions
- Infinitely adjustable air spring
- Fully rebuildable and revalveable

8639-312 FRONT (PAIR) | '16-'24 ProClimb M 36"

SHOCK OPTIONS

SKI	ARCTIC CAT IFP 1.5	FOX 1.5 ZERO QS3	FOX 1.5 ZERO QS3R	FOX FLOAT QS3
'14-'24 ZR; '20-'24 Riot; '18-'19 Pantera; '12-'19 XF; '12-'13 F 42" 6/8000 (EXCEPT '24 600)	8639-306	8639-308	8639-309	—
'14-'24 ZR; '23-'24 Riot; '15-'24 Pantera; '12-'19 XF; '12-'13 F 42" 3/7/9000	8639-307	8639-308	8639-309	—
'16-'24 PROCLIMB M 36"	—	—	—	8639-312

REAR ARM	ARCTIC CAT IFP 2.0	FOX 2.0 ZERO QS3	FOX FLOAT 3 QSL
'14-'23 ZR 129"	8639-317	8639-319	—
'14-'23 ZR; '17-'23 Thundercat; '14-'19 XF 137"	8639-318	8639-320	—
'20-'23 Riot; '20 Riot X 146"	—	8639-323	—
'16-'19 M 153, 162"	—	—	8639-325

QS3

(3 SETTING QUICK POSITION SWITCH)

Choose from three specifically calibrated ride control settings to tune in your own personal ride and handling setting. The QS3 supplies a wide range of adjustments while simply allowing the user to make a change quickly without tools.

REBOUND DAMPING

Rebound damping controls the rate at which the shock returns after it has been compressed. The proper rebound setting is a personal preference and changes with rider weight, riding style and conditions.



FOX FLOAT GUARD KIT

- Protect your FOX Float air shocks from damage and extend the life of critical seals and components
- Simple installation, includes LH and RH guards and hardware
- Compatible with Float 1/2/3, Evol, and Evol R

7639-640 BLACK | FOX Float 1/2/3/EVOL/EVOL R Shocks

7639-643 WHITE | (Same application as 7639-640)

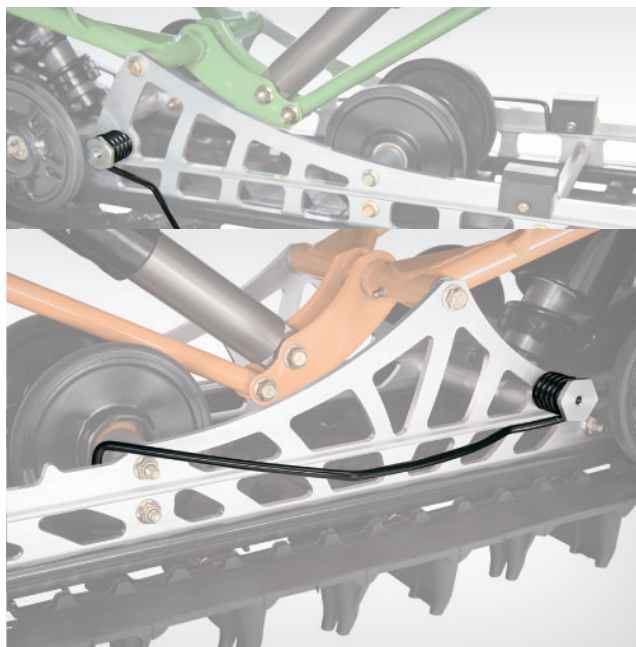
7639-641 TEAM ARCTIC GREEN | (Same application as 7639-640)



TIGER SLIDE WEAR STRIPS

- High-performance slide rail wear strips provide superior wear resistance and improved track durability in hardpack conditions
- Advanced, high-lubricity, ultra-low friction inserts are angled at 60° for continuous contact with track clips
- Molded white and black swirl pattern for a custom look
- Narrow profile for universal fit, easily cut to length for any application
- Sold individually

8639-422 WHITE/BLACK | Universal 121-165" **NEW**



ICE SCRATCHERS

- Helps prevent wear strip overheating on ice and hardpack
- Use caution when operating sled in reverse
- Some models require the removal of forward idler wheels
- Sold in pairs

5639-897 | UNIVERSAL TWIN RAIL **BEST SELLER**

1704-734 LH / 1704-735 RH | FITS ICE SCRATCHERS 5639-897

5639-941 | FITS ICE SCRATCHERS 5639-897



SPEEDWERX HYPERSHIFT CLUTCH KITS

- Developed and trusted by Team Arctic racers and designed for the demands of the high-performance rider
- Provides smooth, hard-pulling acceleration with excellent back shifting and throttle response
- Some models may see improved top speed
- Kits vary by application, but most include adjustable machined weights, H5 alloy primary and secondary springs, and a custom-cut helix
- Calibrated for 0-5000ft elevation and up to 1.35" track lug height unless otherwise indicated

8639-541 ADAPT | '22-'24 ZR 8000 **NEW**

8639-359 TEAM | '20-'21 ZR 8000

8639-107 TEAM | '18-'19 ZR 8000

7639-856 TEAM | '17 ZR 8000

4639-615 ARCTIC | '14-'15 ZR, XF 8000; '12-'13 F, XF 800 **NEW**

8639-542 ADAPT | '24 ZR 600 **NEW**

8639-540 ADAPT | '22-'23 ZR 6000 **NEW**

8639-358 TEAM | '18-'21 ZR 6000

7639-855 TEAM | '17 ZR 6000

7639-863 TEAM | '18-'19 M 8000 (6-8,000 FT)

7639-877 TEAM | '16-'17 M 8000 (3-6,000 FT)

7639-859 TEAM | '16-'17 M 8000 (8-10,000 FT)



BILLET BRAKE LEVER

- Comfortable, custom design with an anodized finish
- Accepts production park brake lock

8639-051 BLACK | Universal '19-'24

8639-052 GRAY | (Same application as 8639-051)

8639-053 PURPLE | (Same application as 8639-051)

8639-229 BRONZE | (Same application as 8639-051)



SNO PRO® BRAKE LEVER

- Aluminum lever with a curved tip design
- Accepts production park brake lock

8639-099 BLACK | Universal '19-'24

2602-770 BLACK | Universal '12-'18



HEAVY-DUTY BRAKE DISC

- Increase stopping performance with cross-drilled, waved Hayes brake rotor
- Fits models with 34T splined driveshaft
- Standard on RR and R-XC models

2602-720 | '14-'24 ZR, Thundercat; '20-'24 Riot, Riot X; '21-'24 BLAST; '12-'24 M; '12-'17 XF; '12-'13 F



EXTREME-DUTY BRAKE DISC

- Engineered for the extreme demands of snocross racing, this Hayes brake disc provides unmatched stopping power
- Cross-drilled, floating rotor design and stainless steel construction for superior heat dissipation and consistent performance
- Fits models with 34T splined driveshaft
- Requires 3602-017 Racing Brake Pads

3602-020 | '14-'24 ZR, Thundercat; '20-'24 Riot, Riot X; '21-'24 BLAST; '12-'24 M; '12-'17 XF; '12-'13 F



RACING BRAKE PAD SET

- Improve brake system performance and extend wear life with metallic, heat-resistant brake pads
- Includes 2 pads and 1 retaining pin

3602-017 | '14-'24 ZR, Thundercat; '20-'24 Riot, Riot X; '21-'24 BLAST; '12-'24 M; '12-'17 XF; '12-'13 F



HARDCORE RUNNING BOARDS

- Aluminum tube running boards offer aggressive grip traction, increased stiffness, and 4-lbs weight reduction
- Replaces factory running boards with no cutting or permanent modification required
- Available in two versions optimized for on or off-trail models
- Durable, factory-matched powder-coat finish for a custom look
- Accepts factory or accessory rear bumper
- Includes RH and LH boards, hardware, and instructions

8639-466 SKYE BLUE | '24 M 600 **NEW**

8639-374 MEDIUM GREEN | '24 ZR, Riot 600 **NEW**

8639-474 FIRE RED | '24 ZR, Riot 600 **NEW**



ASCENDER RUNNING BOARDS

- Rugged, extruded aluminum boards add strength and reduce snow buildup
- Aggressive edge grip traction
- Installation requires removal of stock running boards
- Includes RH and LH boards
- 6.5 lbs

7639-437 BLACK | '18-'24 M; (Except '24 600) '21-'24 Riot X; '17-'19 Mountain Cat, King Cat

8639-078 MEDIUM GREEN (Same application as 7639-437)

8639-271 HYPER GREEN | (Same application as 7639-437)

8639-079 PURPLE | (Same application as 7639-437)

7639-435 BLACK | '20-'24 Riot; (Except '24 600) '20 Riot X; '12-'19 XF High Country; '12-'17 M (Except Mountain Cat)

7639-436 ALUMINUM | (Same application as 7639-435)



PRO MTN RUNNING BOARDS

- Aluminum running boards feature an open-tube design that reduces snow buildup
- Includes aggressive, injection-molded rail grippers
- 6.25" front stirrup width
- Front support tube allows a more forward foot position when sidehilling
- Installation requires removal of stock running boards
- Includes right-hand and left-hand boards and rail grippers
- Accepts factory or accessory rear bumper
- 8.5 lbs

8639-070 BLACK | '12-'24 M; '20-'24 Riot; (Except '24 600) '20 Riot X; '12-'19 XF High Country; '17-'19 King Cat

8639-071 MEDIUM GREEN | (Same application as 8639-070)

8639-274 HYPER GREEN | (Same application as 8639-070)

7639-441 TEAM ARCTIC GREEN | (Same application as 8639-070)

7639-442 ORANGE | (Same application as 8639-070)

7639-443 WHITE | (Same application as 8639-070)

8639-275 DYNAMIC CHARCOAL | (Same application as 8639-070)

8639-073 PURPLE | (Same application as 8639-070)

REPLACEMENT PARTS

7639-589 OUTER CLEAT (PAIR) | Fits Pro MTN Running Boards

7639-956 INNER CLEAT (PAIR) | Fits Pro MTN Running Boards

1641-388 HARDWARE KIT | Fits Pro MTN Running Boards



RUNNING BOARD TRACTION

- Aluminum running board grippers provide added boot traction
- Includes eight grips with rivets

8639-391 | Universal



TUNNEL GRIPS

- Raised, rubberized grip features provide additional boot traction on tunnel sides for aggressive riding or racing
- Includes 15.5" x 4.25" flexible, adhesive-backed panels (Pair)
- Trimmable to fit any machine

5639-814 CLEAR | Universal



ASCENDER PRO SEAT

- Lightweight mountain seat provides improved comfort and function
- 1-in. narrower and 1-in. taller than the standard seat
- Added support at the rear of the seat for taller riders
- Includes black seat assembly and powder-coated aluminum seat frame
- Fits 6/8000 non-electric start models with a short tank and seat

8639-255 MEDIUM GREEN | '18-'24 M 8000; '18-'20 M 6000 (Non-ES Models)

8639-168 ALUMINUM | (Same application as 8639-255)



LED HEADLIGHT

- Delivers greater performance than a halogen system
- When the high beam is activated, the low beam also stays on to deliver a light pattern with great range and width
- Features stylish accent lighting
- Includes headlight assembly and wiring harness
- Fits Gen 2 ProCross models with halogen headlight

7639-989 | '19-'24 Norseman; '20-'23 Riot; '19-'20 ZR 6/8000; '19-'20 M; '19 XF High Country

0709-096 | '18 ZR, M, XF, Norseman, Pantera 6/8000



PANEL VENT KIT

- Side panel vents allow cool air into the clutches and exhaust
- Laser-cut aluminum grills with stainless steel mesh screens to keep the snow out
- Sold as a pair

7639-972 GEN 2 PROCROSS TRAIL | '18-'24 6/8000 (Except M, '21-'24 Riot X); '17-'24 9000; '19-'24 7000; '19 3000

7639-974 GEN 2 PROCLIMB MTN | '18-'24 M 8000; '21-'24 Riot X; '21-'24 BLAST; '18-'20 M 6000



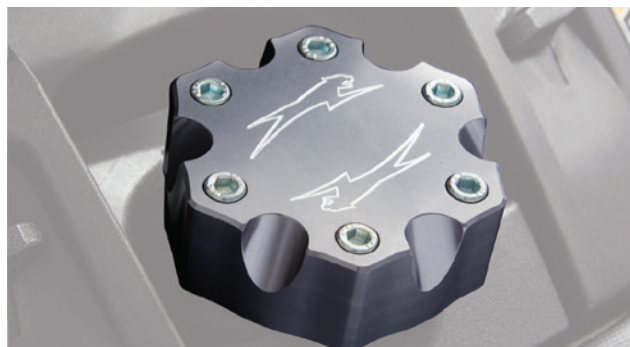
PRO MTN CAP

- Lightweight, stylish billet aluminum

7639-844 BLACK | Universal '12-'24

8639-049 PURPLE | (Same application as 7639-844)

8639-228 BRONZE | (Same application as 7639-844)



PROCROSS CAP

- Billet aluminum for a custom look

7639-405 BLACK | Universal '12-'24



BILLET RECOIL HANDLE

- Billet aluminum for a custom look

7639-408 ALUMINUM | Universal

7639-924 GRAY | Universal



NUMBER PLATE KIT

- Competition-legal racing number plates
- Made of molded plastic with excellent cold weather durability
- Includes RH plate, LH plate, and rivets

8639-127 | Universal



RACING TAPE

- Trusted by Team Arctic racers, this sticky tape is extra strong for the toughest applications
- Each roll is 2" x 60 yds.

4639-579 BLACK | Universal

5639-103 ORANGE | Universal

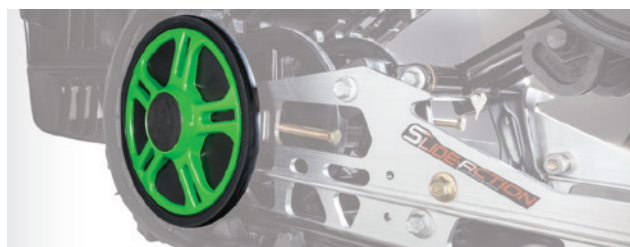


FOUR WHEEL KIT

- Replaces tri-hub rear axle wheels and adds outside wheels
- Helps keep track in proper alignment and spread the traction load evenly
- Includes wheels, machined aluminum spacers and hardware

7639-865 7.12" WHEELS | '14-'18 ZR 129", '13 F (Except RR)

7639-866 8" WHEELS | '16-'18 ZR, Thundercat 137"; '14-'18 XF; '16-'18 M 141"; '12-'18 M 153-162"



REAR WHEEL KIT

- Outside idler wheels help keep track in proper alignment and distribute load evenly
- Recommended when adding studs to the models listed
- Includes wheels, spacer blocks and hardware
- Sold in pairs

6639-621 BLACK | '16-'18 ZR, Thundercat, XF Cross Country 137"; '16-'19 M, XF High Country 141"; '12-'18 M 153-162"

7639-883 MEDIUM GREEN | (Same application as 6639-621)

6639-622 TEAM ARCTIC GREEN | (Same application as 6639-621)

6639-617 BLACK | '14-'18 ZR; '12-'13 F 128-129"

7639-882 MEDIUM GREEN | (Same application as 6639-617)

6639-618 TEAM ARCTIC GREEN | (Same application as 6639-617)

6639-619 ORANGE | (Same application as 6639-617)



BILLET AXLE WASHERS

- Billet aluminum washers give your 2-wheel rear axle a custom look
- Sold in pairs

7639-409 BLACK | '14-'18 ZR; '12-'18 XF (All); '09-'18 M; '12-'13 F (Except RR)

7639-410 ALUMINUM | (Same application as 7639-409)



RAIL CAP WHEEL KIT

- Helps prevent track from contacting the slide-rail end caps
- Includes two 2.5" x 0.787" idler wheels, rail caps and a heavy-duty axle shaft

7639-987 | '09-'19 M 141, 153, 162"; '20-'24 Riot; '20 Riot X; '12-'19 XF 141-153"



WHEEL KITS

- Wheels provide increased performance in low snow conditions
- Includes two 5.63" wheels with mounts and hardware

6639-808 | '15-'18 ZR 129"; '16-'18 ZR 137"; '14-'19 XF 137"



BACKCOUNTRY ACCESS

A snowmobiler is shown in action, riding a bright green Arctic Cat sled through a snowy forest. The rider is wearing a black jacket, black pants, a black helmet with a red and yellow visor, and black gloves. The sled is equipped with a bright green front bumper, adjustable bar risers, and black hand guards. The sled is kicking up a large cloud of snow, and the background is a dense forest of snow-covered trees.

FEATURED ON SLED:
8639-406/PROCLIMB BUMPER - MEDIUM GREEN
8639-476/ADJUSTABLE BAR RISER
8639-510/FLEX-TEC LITE HAND GUARDS - BLACK

The Float avalanche airbag system is designed to keep you at or near the surface during an avalanche. It is one of the most proactive snow safety tools you can carry into avalanche terrain. BCA Float avalanche airbags are both affordable and easily reusable.

- > Features a small 2,700-psi (186 bar) compressed-air cylinder, single-chamber 150-liter airbag and super-efficient venturi system
- > Trigger is located on right shoulder strap, allowing you to keep your right hand on the throttle
- > Includes pressurized air cylinder
- > Hazardous-shipping charges may apply



FLOAT MTNPRO 2.0 VEST

- Lightweight, protective vest with airbag
- Full front, side and back protection
- Two sizes to fit most riders
- Float 2.0 System
- Shovel not included
- 8.6 lbs, 20-liter capacity

NOT SOLD INTERNATIONAL



FLOAT 15 TURBO™

- Internal tool pocket for probe
- External shovel carry
Shovel not included
- Float 2.0 System
- 6.1 lbs, 15-liter capacity

NOT SOLD INTERNATIONAL



FLOAT 25 TURBO™

- Internal tool pocket for probe
- External shovel carry
- Shovel not included
- Float 2.0 System
- 6.9 lbs, 25-liter capacity

NOT SOLD INTERNATIONAL



FLOAT 2.0 AIR CYLINDER

- Replacement pressurized air canister

NOT SOLD INTERNATIONAL

In an on-mountain emergency, these easy-to-use and efficient transceivers are a necessity among your supplies.



TRACKER 3

- BCA's most efficient, progressive design and most precise pinpointing
- Instantaneous, real-time display
- Small and light with three antennas for no-nonsense multiple burial searching
- Includes harness

NOT SOLD INTERNATIONAL

BCA Quick-Lock probes save valuable seconds when time matters. They offer the easiest and fastest assembly on the market, all while freeing up valuable storage space in your pack.



STEALTH 270

- High-strength aluminum probe with laser etched depth markings for added durability
- Collapsed 17.7", extended 8' 10"
- 10.4 OZ.

6639-444 | ONE SIZE **BEST SELLER**



TRACKER S

- Simplicity is speed — our stripped-down, more affordable transceiver
- All the performance of the T3, without motion-sensing or upgradeable software

NOT SOLD INTERNATIONAL

Strong group communication is the key to any successful day riding the mountains. Find separated riders, communicate plans and share observations in real time with the BC Link™ communication system. The Smart Mic user interface is located at your fingertips, meaning you never need to dig your 2-way radio out of your pack to change settings. Glovefriendly controls include: on/off and volume control, channel control, push-to-talk button, loudspeaker, earphone jack and battery indicator. Rechargeable lithium ion battery pack provides up to 4 days of battery life in cold weather. BC Link 2-way radios operate on 22 FRS GMRS channels + 121 sub-channels to ensure minimal interference.



BC LINK 2.0 RADIO

- 2 watts for increased usable range

NOT SOLD INTERNATIONAL



BC LINK 1.0 RADIO

- 1 watt

NOT SOLD INTERNATIONAL



BC LINK REPLACEMENT BATTERY

- Fits BC Link 1.0 Radio

1641-117 | ONE SIZE

DOZER 1T SHOVEL

- Extendable-handle shovel with an amazing strength-to-weight ratio
- Low-profile, stomp edge blade on an ovo-concave shaft with an ergonomic grip
- Extends up to 30" long, 9" X 10.5" blade, 1.2 lbs

NOT SOLD INTERNATIONAL



A-2 EXT SHOVEL

- An integrated shovel system with a larger blade and extendable handle
- Includes an 11.4-in. snow/wood saw stowed inside the grip
- Extends up to 30.5" long, 10" x 11" blade, 1.9 lbs

5639-786 | ONE SIZE



D-2 EXT SHOVEL

- Converts from a traditional shovel to a hoe
- Move more snow without lifting it
- Includes a 6.5" snow/wood saw stowed inside the shaft
- Extends to 32" long, 10" x 11" blade, 2.1 lbs

7639-765 | ONE SIZE



COBRA™

- Sled-to-sled pulling tool
- Made of stretch cords bundled in a corrugated vinyl tube with a hook on both ends
- Creates 300 to 400 lbs of static pulling force

5639-640 | ONE SIZE



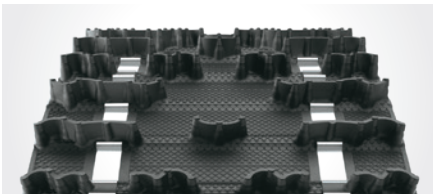
RATTLER

- Maximizes the pulling force of your body
- Made of strong stretch cords bundled in a corrugated vinyl tube
- Safety strap hook attaches to the ski of the stuck sled with a grab handle on the other end

5639-639 | ONE SIZE

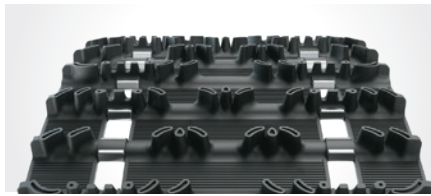


TRACKS



COBRA

- Cupped lugs for superior handling, acceleration and braking on soft, loose trails
- Excellent off-trail performance without sacrificing top speed



HACKSAW™

- Crescent lug design with recessed tips and cutting edges provides grip on hard-packed trails
- Narrow lug base provides less rolling resistance for maximum top speed



POWER CLAW™

- This lightweight single-ply track sets the standard for deep snow performance
- Stagger-set, curved-forward paddle towers won't fold over or take a set
- Available in 2.25" and 2.6" lug heights with 80 or 85 durometer



3" POWER CLAW

- Full 3" lug height brings maximum control to even the deepest snow
- Lightweight single-ply track features stagger-set, curved-forward paddle towers that won't fold over or take a set
- 80 durometer hardness rating for rugged performance
- Requires 7-tooth driveshaft



RIPSAW™

- Aggressive angled lug profiles for outstanding traction on groomed trails
- Rigid lugs provide excellent durability



RIPSAW II

- Lug design combines the best features of Ripsaw and Cobra tracks for excellent all-around performance
- Less track noise for quieter operation on hard-packed trails



BACKCOUNTRY X

- Snocross-inspired, arched lugs are staggered for outstanding traction in soft snow
- Rigid lug support columns for on- and off-trail performance



ALPHA ONE TRACK + DRIVER UPDATE KIT

- Upgrade the durability of your Alpha One-equipped machine with reinforced track construction and revised drive sprockets
- Includes updated 2-Window Track and Track Drive Assembly

0728-277 15 X 146 X 2.6" (2.86 P) | '21 Riot X 146"

0728-278 15 X 154 X 2.6" (2.86 P) | '21 M 154"

0728-280 15 X 154 X 3.0" (3.5 P) | '19-'22 M 154"

0728-279 15 X 165 X 3.0" (3.5 P) | '19-'22 M 165"

PART NUMBER	DESCRIPTION	DIMENSION	CLIPS
PERFORMANCE 2.52 P			
3602-294	HACKSAW (SINGLE-PLY) - 80/70 DURO	14 X 121 X 1.00"	CLIPPED EVERY 3RD
2602-046	RIPSAW - 80/70 DURO	15 X 128 X 1.25"	CLIPPED EVERY 3RD
2602-835	RIPSAW - 80/70 DURO	15 X 128 X 1.50"	CLIPPED EVERY 3RD
PERFORMANCE 2.86 P			
2602-575	RIPSAW II - 80/70 DURO	15 X 129 X 1.00"	CLIPPED EVERY OTHER
2602-576	RIPSAW - 80/70 DURO	15 X 129 X 1.25"	CLIPPED EVERY OTHER
2602-491	COBRA - 80/70 DURO	15 X 129 X 1.35"	CLIPPED EVERY OTHER
2602-865	SNO PRO - 80/70 DURO	15 X 129 X 1.70"	CLIPPED EVERY OTHER
3602-202	RIPSAW - 80/70 DURO	15 X 137 X 1.00"	FULLY CLIPPED
2602-627	RIPSAW II - 80/70 DURO	15 X 137 X 1.25"	CLIPPED EVERY OTHER
3602-303	COBRA - 80/70 DURO	15 X 137 X 1.35"	FULLY CLIPPED
2602-909	COBRA - 80/70 DURO	15 X 137 X 1.60"	CLIPPED EVERY OTHER
2602-669	BACKCOUNTRY X - 80/70 DURO	15 X 137 X 1.75"	CLIPPED EVERY OTHER
2602-933	COBRA - 80/70 DURO	15 X 146 X 1.35"	FULLY CLIPPED
3602-237	COBRA - 80/70 DURO	15 X 146 X 1.60"	FULLY CLIPPED
3602-397	HURRICANE NEW	15 X 146 X 1.75"	CLIPPED EVERY OTHER
3602-240	CHALLENGER - 80 DURO	15 X 146 X 2.00"	FULLY CLIPPED
TOURING 2.52 P			
2602-528	HACKSAW - 80/70 DURO	15 X 136 X 1.00"	CLIPPED EVERY 3RD
TOURING 2.86 P			
2602-521	RIPSAW II - 80/70 DURO	15 X 146 X 1.00"	CLIPPED EVERY 3RD
2602-512	RIPSAW - 80/70 DURO	15 X 146 X 1.25"	CLIPPED EVERY 3RD
3602-067	COBRA (SINGLE-PLY) - 80/70 DURO	15 X 154 X 1.60"	CLIPPED EVERY OTHER
MOUNTAIN 2.86 P			
3602-372	CHALLENGER/ALPHA - 80 DURO	15 X 146 X 2.00"	CLIPPED EVERY OTHER (2-WINDOW)
3602-371	CROSS COUNTRY/ALPHA (SINGLE-PLY) - 80 DURO	15 X 146 X 2.60"	CLIPPED EVERY OTHER (2-WINDOW)
3602-370	CROSS COUNTRY/ALPHA (SINGLE-PLY) - 80 DURO	15 X 154 X 2.60"	CLIPPED EVERY OTHER (2-WINDOW)
MOUNTAIN 3.0 P			
2602-169	COBRA (SINGLE-PLY) - 80 DURO	15 X 141 X 1.35"	CLIPPED EVERY OTHER
2602-170	COBRA (SINGLE-PLY) - 80 DURO	15 X 141 X 1.60"	CLIPPED EVERY OTHER
3602-143	POWER CLAW (SINGLE-PLY) - 80 DURO	15 X 141 X 2.25"	CLIPPED EVERY OTHER
3602-141	POWER CLAW (SINGLE-PLY) - 80 DURO	15 X 141 X 2.60"	CLIPPED EVERY OTHER
3602-145	BACKCOUNTRY X (SINGLE-PLY) - 80/70 DURO	15 X 153 X 1.75"	CLIPPED EVERY OTHER
3602-142	POWER CLAW (SINGLE-PLY) - 80 DURO	15 X 153 X 2.25"	CLIPPED EVERY OTHER
2602-399	POWER CLAW (SINGLE-PLY) - 85 DURO	15 X 153 X 2.25"	CLIPPED EVERY OTHER
3602-140	POWER CLAW (SINGLE-PLY) - 80 DURO	15 X 153 X 2.60"	CLIPPED EVERY OTHER
2602-482	POWER CLAW (SINGLE-PLY) - 85 DURO	15 X 153 X 2.60"	CLIPPED EVERY OTHER
3602-138	POWER CLAW (SINGLE-PLY) - 80 DURO	15 X 153 X 3.00"	CLIPPED EVERY OTHER
2602-483	POWER CLAW (SINGLE-PLY) - 80 DURO	15 X 162 X 2.60"	CLIPPED EVERY OTHER
2602-484	POWER CLAW (SINGLE-PLY) - 85 DURO	15 X 162 X 2.60"	CLIPPED EVERY OTHER
3602-137	POWER CLAW (SINGLE-PLY) - 80 DURO	15 X 162 X 3.00"	CLIPPED EVERY OTHER
MOUNTAIN 3.5 P			
3602-368	POWER CLAW/ALPHA (SINGLE-PLY) - 80 DURO	15 X 154 X 3.00"	CLIPPED EVERY OTHER (2-WINDOW)
3602-369	POWER CLAW/ALPHA (SINGLE-PLY) - 80 DURO	15 X 165 X 3.00"	CLIPPED EVERY OTHER (2-WINDOW)
UTILITY 2.52 P			
2602-314	RIPSAW (SINGLE-PLY) - 80/70 DURO	15 X 151 X 1.25"	CLIPPED EVERY OTHER
UTILITY 2.86 P			
2602-639	(SINGLE-PLY) - 60 DURO	20 X 154 X 1.375"	CLIPPED EVERY OTHER
3602-058	BEARCLAW (SINGLE-PLY) - 80/70 DURO	20 X 154 X 1.375"	CLIPPED EVERY OTHER
3602-059	BEARCLAW (SINGLE-PLY) - 80/70 DURO	20 X 154 X 1.60"	CLIPPED EVERY OTHER

MOUNTAIN



Deep powder, steep climbs and white-knuckle carving. The air up here isn't for casual riders.



HANDLING & TRACTION



FEATURED ON SLED:
8639-406/PROCLIMB BUMPER - MEDIUM GREEN
8639-476/ADJUSTABLE BAR RISER
8639-510/FLEX-TEC LITE HAND GUARDS - BLACK



PROCROSS-6 SKIS

- 6" width for precise on-trail handling
- Includes pair of skis, handles, mounting hardware, and 4" carbide wearbars

6639-206 BLACK | 'Universal '12-'24



PROCLIMB-7 G2 SKIS

- 7" width and deep keel for off-trail carving control
- Includes pair of skis, handles, mounting hardware, and 4" carbide wearbars

8639-064 BLACK | 'Universal '12-'24



PROUTE-10/8 SKIS

- 8" width and 10" tip for ultimate flotation
- Includes pair of skis, handles, mounting hardware, and 4" carbide wearbars

7639-032 BLACK | 'Universal '12-'24



SLP POWDER PRO SKIS

- Exceptional float and control in deep, loose snow
- Includes pair of skis, handles, saddles, and mounting hardware
- Wearbars sold separately

7639-095 BLACK | 'Universal '12-'24



SLP MOHAWK SKIS

- Provides predictable handling and great flotation
- Includes pair of skis, handles, saddles, and mounting hardware
- Wearbars sold separately

7639-095 BLACK | 'Universal '12-'24

7639-201 WHITE | (Same application as 7639-095)



SKI HANDLES

CATALYST

- Personalize your Arctic Cat skis with colored handles
- Sold in pairs

8639-535 BLACK | '05-'24 Saddleless Skis

NEW

8639-536 MEDIUM GREEN | (Same application as 8639-535)

NEW

8639-537 FIRE RED | (Same application as 8639-535)

NEW

8639-538 SKYE BLUE | (Same application as 8639-535)

NEW



SKI HANDLES

- Personalize your Arctic Cat skis with colored handles
- Sold in pairs

7639-820 MEDIUM GREEN | '05-'24 Saddleless Skis

8639-243 HYPER GREEN | (Same application as 7639-820)

6639-388 TEAM ARCTIC GREEN | (Same application as 7639-820)

5639-744 ORANGE | (Same application as 7639-820)

6639-095 WHITE | (Same application as 7639-820)

8639-047 PURPLE | (Same application as 7639-820)

3639-781 GREEN | '95-'08 Aluminum Saddle Skis

3639-865 ORANGE | (Same application as 3639-781)



36" FRONT SUSPENSION KIT

- Make off-trail handling effortless with the ultra-nimble 36"
- Arctic Mountain Suspension™ (AMS) ski stance
- Includes black upper and lower A-arms, tie-rods, hardware, and instructions
- 8639-471 also includes twin tube coil-over shocks

8639-471 | '21-'24 BLAST M, '21 BLAST M LTD

8639-477 (NO SHOCKS) | '16-'24 ProClimb, Ascender Models With 36" Ski Stance (Replacement)



REAR SUSPENSION SPRINGS

- Heavy-duty torsion springs provide a firmer ride and help prevent the rear suspension from bottoming out under high load
- Light-duty torsion springs provide a smoother, softer ride quality for less-aggressive riders
- Requires LH and RH spring

8639-544 HEAVY-DUTY (PAIR) | '24 ZR 600 129 **NEW**

8639-545 HEAVY-DUTY (PAIR) | '24 ZR 600 137 **NEW**

8639-546 HEAVY-DUTY (PAIR) | '24 Riot 600 **NEW**

8639-417 HEAVY-DUTY (PAIR) | '21-'24 BLAST ZR

1704-504/505 HEAVY-DUTY | '22-'24 BLAST XR; '21-'24 BLAST LT

1704-710/711 HEAVY-DUTY | '16-'24 ZR, Thundercat, XF 137"; '20-'24 Riot; '15-'20 LYNX 2000

2704-560/561 HEAVY DUTY | '17-'19 ZR, XF 6/8/9000 RR/SNO PRO

1704-842/843 HEAVY-DUTY | '15-'20 Bearcat 2000 XT

3704-726/727 LIGHT-DUTY | '16-'24 ZR, Thundercat, XF 137"; '20-'24 Riot; '15-'20 Lynx 2000

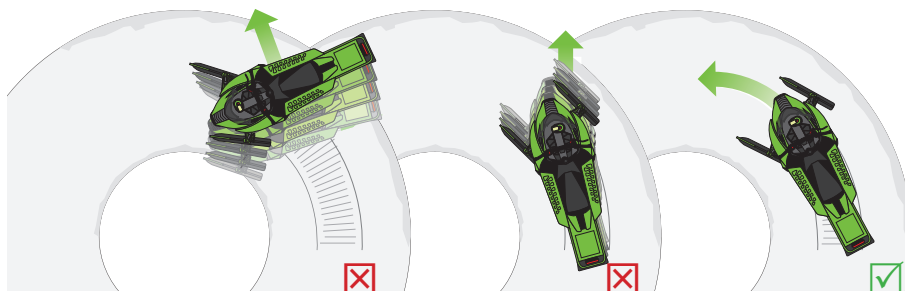
1704-576/577 LIGHT-DUTY | '15-'20 Lynx 2000

1704-562/563 LIGHT-DUTY | '15-'20 Bearcat 2000 XT

OPTIMIZE CONTROL

MAXIMIZE STEERING CONTROL

The length of the turning carbide (carbide inserted directly under the steering spindle) is the determining factor on steering control. The longer the turning carbide, the more positive turning becomes. Too few studs with long turning carbides can result in the situation shown in Illustration 1 below.



MAXIMIZE TRACTION CONTROL

The quantity and types of studs inserted through the track can have several effects. If installed improperly, track and/or stud damage can result. If the pushing force from an excessive number of studs exceeds the ability of the steering to control the force, the effect could be like that in Illustration 2. In this case, the studs tend to "push" the skis in a straight line.

- ❌ Back end loose. Too much carbide, not enough steering control.
- ❌ Front end pushes. Weak steering from worn wearbars, turning carbides too short or overstudding on track.
- ✅ Steering control and stud quantity are in balance for proper setup.

WHAT'S YOUR RIDING STYLE? ARE YOU... Determining the proper traction and control is simple. What's your riding style: Are you a conservative trail rider or a performance trail rider? Look at the chart below. Find the line with the horsepower of your sled. Look under your riding category. Here you will find the number of studs and the length of the carbide wearbar you should use. This is a baseline guide for stud and wearbar selection. See your dealer for specific model applications.

STUD QUANTITY / INCHES OF TURNING CARBIDE

SLED	TRAIL	PERFORMANCE
50-75 HP	48/4"	48/6"
75-125 HP	102/6"	153/8"
125-150 HP	153/8"	153/10"
150-200 HP	153/8"	153/10"

FOR STUD PLACEMENT, USE AN ARCTIC CAT-APPROVED STUD TEMPLATE SHOWN ON PAGE 85.

Arctic Cat traction products are available in package quantities that will give you the best combinations for 129" and 137" tracks.

RECOMMENDED STUD LENGTH (IN.)

TRACK LUG HEIGHT	WOODY'S® STUD LENGTH
1.000	1.075
1.250	1.325
1.352	1.325
1.500	1.575
1.600	1.575

Cobra 1.35/1.60" tracks have a standard lug height of 1.25/1.50". The overall lug height includes the extended "towers" at 1.35" because the towers will flex. These Cobra tracks do not use studs longer than their nominal lug height.



CAUTION

- To protect the tunnel from possible damage from the studs, it is recommended that Tunnel Protector Kit be installed on those models not so equipped
- A Short Snowflap is required when installing studs on '07-'09 F Series; '09 Z1, Z1 Turbo; '09-'11 Crossfire™ and CFR
- See your dealer for additional information

STUD PLACEMENT

- DO NOT use studs that are longer than recommended
- DO NOT place studs in line with the heat exchanger or tunnel protector strip, and factor in the amount of suspension travel to avoid tunnel damage
- Studs MUST NOT extend more than 3/8" beyond the rubber track lugs
- Verify adequate clearance between the track, tunnel and heat exchanger to avoid serious damage
- Confirm that your machine has adequate tunnel protection before installing studs
- Use an Arctic Cat-approved Stud Template shown on page 85
- The length of carbide and number of studs must coordinate to result in balanced handling and proper control



SINGLE RUNNER

- Ideal on ice and hardpack, but works well anywhere
- May provide a noted speed increase compared to a dual wearbar
- Hardweld wearbars have a 7/16" host bar
- Carbide wearbars have a 1/2" host bar
- Sold in pairs

3639-309 HARDWELD WEARBAR (PAIR) | '05-'24 Saddleless Skis

3639-310 4" CARBIDE (PAIR) | (Same application as 3639-309)

3639-311 6" CARBIDE (PAIR) | (Same application as 3639-309)

3639-312 8" CARBIDE (PAIR) | (Same application as 3639-309)



ACE™ WEARBARS

- Utilizes a preformed, square steel bar with a tall, aggressive profile
- Provides excellent control
- Sold in pairs

6639-850 6" CARBIDE | '05-'24 Saddleless Skis

6639-799 8" CARBIDE | (Same application as 6639-850)



SHAPER™ WEARBARS

- Offers more precise turning than conventional wearbars
- 20% lighter than round wearbars
- Sold in pairs

4639-949 4.5" CARBIDE (PAIR) | '05-'24 Saddleless Skis

4639-950 6" CARBIDE (PAIR) | (Same application as 4639-949)

4639-951 9" CARBIDE (PAIR) | (Same application as 4639-949)



MAVERICK™ WEARBARS

- Aggressive host bar featuring tall, concave side profile
- Precise bite and cornering control
- Sold in pairs

8639-547 4" CARBIDE (PAIR) | '05-'24 Saddleless Skis **NEW**

8639-548 6" CARBIDE (PAIR) | (Same application as 8639-547) **NEW**

8639-549 8" CARBIDE (PAIR) | (Same application as 8639-547) **NEW**



SLP WEARBARS (PAIR)

- Provides confident steering control on the mountain and on the trail
- Sold in pairs

3639-420 4" CARBIDE | FITS SLP SKIS

3639-421 6" CARBIDE | FITS SLP SKIS



STAGGERED WEARBARS

- Features a single carbide runner and an offset hardweld runner
- Lighter steering than a dual carbide runner
- Reduces darting and plugging
- Available with a standard (0.312) or aggressive (0.500) bar
- Fits '05-'23 Arctic Cat Saddleless Skis
- Sold individually

2703-598/599 4" CARBIDE 3-BOLT .312 | '05-'24 Saddleless Skis

2603-988/989 4" CARBIDE 3-BOLT .500 | (Same application as 2703-598/599)

2603-930/931 4" CARBIDE 4-BOLT .500 | (Same application as 2703-598/599)



DOOLY™ TWIN CARBIDE WEARBARS

- Great, all-trail performance
- Reduces darting
- Features two carbide runners
- Sold individually

3639-343 4" | '05-'24 Saddleless Skis

3639-344 6" | (Same application as 3639-343)

3639-345 " | (Same application as 3639-343)



DEUCE™ TWIN CARBIDE WEARBARS

- Reduces darting and eliminates dual-runner-type drag
- Durable one-piece design
- Features two carbide runners
- Sold individually

5639-251 4.5" | '05-'24 Saddleless Skis

5639-252 6" | (Same application as 5639-251)

5639-253 9" | (Same application as 5639-251)

SINGLE-PLY TRACKS

'21-24 BLAST ZR; '20 Riot X; '18-'19 Norseman 3/6000; '16-'19 Bearcat, Pantera 7000 XT; '15-'20 Bearcat 2000; '15 Bearcat 5000; '14-'15 XF Cross Country, Crosstour; '12-'13 XF; '10-'14 Bearcat 570, Z1 XT

2-PLY TRACKS

'20-'24 Riot; '14-'24 ZR, THUNDERCAT; '16-'19 XF; '12-'13 F; '15-'24 Pantera 3/6/7000, '16-'17 Bearcat 3000, '15-'20 Lynx 2000, '11-'14 SNO PRO; '09-'14 T570, TZ1



GOLD DIGGER TRACTION MASTER (2-PLY)

- 60° carbide, 5/16" thread, 1" head
- The industry-leading and best-selling trail stud
- Outstanding penetration and durability on ice and hardpack from a 60° carbide tip
- Support plates sold separately



DIGGER® (2-PLY) SUPPORT PLATES

- Lightweight aluminum offers serious support
- Added strength from crowned profile
- 1.250" square; 1.375" round



DOUBLE DIGGER (2-PLY) SUPPORT PLATES

- Unmatched support from durable aluminum

2639-135 | 48/PK

GOLD DIGGER® TRACTION MASTER® (2-PLY) TRACTION KITS

Includes studs, support plates, big nuts, template, stud drill and track marker

8639-235 96/PK (ROUND & DOUBLE PLATES) | '19-'20 Thundercat; '20 ZR Sno Pro 137 X 1.00" 2.86 P (1075-Series Studs)

8639-100 144/PK (ROUND & DOUBLE PLATES) | (Same application as 8639-235)

8639-224 102/PK 102/PK (ROUND PLATES) | '20-'24 Riot 146 X 1.35" 2.86 P 1325-Series Studs)

8639-234 102/PK 102/PK (ROUND PLATES) | '20-'24 Riot; '21-'24 BLAST LT, XR 146 X 1.60" 2.86 P (1325-Series Studs)



SIGNATURE SERIES STAINLESS STEEL (2-PLY)

- 60° carbide, 5/16" thread, 15/16" head
- Woody's proven push-through stainless steel stud at a competitive price
- Support Plates sold separately

SIGNATURE SERIES™ (2-PLY) TRACTION KITS

- Includes studs, support plates, big nuts, template, stud drill and track marker

6639-454 96/PK (SQUARE PLATES) | '16-'24 ZR; '17-'18, '21-'24 Thundercat; '14-'15 XF LXR, Sno Pro; 137 X 1.25" 2.86 P (1325-Series)

6639-455 144/PK (SQUARE PLATES) | (Same application as 6639-454)

6639-856 96/PK (ROUND PLATES) | (Same application as 6639-454)

6639-857 144/PK (ROUND PLATES) | (Same application as 6639-454)

7639-564 102/PK (ROUND PLATES) | '16-'24 Pantera 7000; '18-'19 Pantera 6000; '16-'18 XF CrossTour 7000 146 X 1.25" 2.86 P (1325-Series)

8639-293 135/PK (SQUARE & DOUBLE PLATES) | '14-'24 ZR; '13 F 129 X 1.25" 2.86 P 1325-Series

GRAND MASTER® (SINGLE-PLY) TRACTION KITS

- Studs feature a larger head design required for use on models with a single-ply track
- Includes studs, support plates, big nuts, template, stud drill and track marker
- 60° carbide, 5/16" thread, 1.20" head, 1.50" support plates

8639-421 96/PK | '21-'24 BLAST ZR; 121 X 1.00" 2.52 P (1075 Series)

7639-741 108/PK | '18-'19 Bearcat 7000 XT 20 X 154 X 1.60" 2.86 P ((1575 Series)

5639-626 108/PK | '11-'17 Bearcat XT 20 X 154 X 1.375" 2.86 P (1450 Series)



7639-138

TUNNEL PROTECTOR KIT

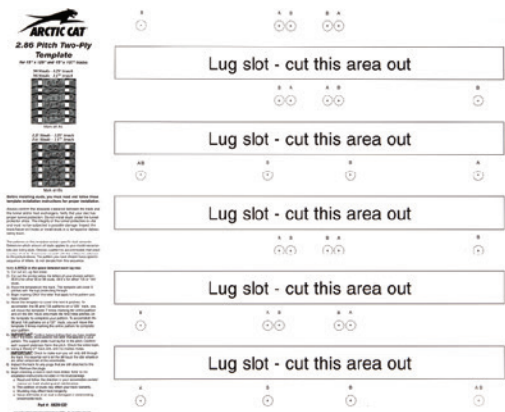
- Required when installing studs on models listed below
NOTE: Compatible 4000 and 7000 series models do not require tunnel protector kit

8639-453 | '24 ZR, Riot 600 129-146" **NEW**

7639-138 | '18-'24 ZR, Riot 8000; '18-'23 ZR, Riot 6000; '17-'24 ZR, Riot 9000, Thundercat; '18-'19 Pantera, XF Cross Country, CrossTrek 6/8000; '17-'19 XF 9000; 129-146"
BEST SELLER

6639-075 | '14-'17 ZR 6/8000; '15-'17 ZR 4000; '14-'16 ZR 5/9000; '13 F 129"

6639-118 | '16-'17 ZR 6/8000; '17 ZR 5000; '16 ZR 9000; '13-'15 XF 6/8/9000 137-141"



STUD TEMPLATE

- Available in patterns perfectly matched to your riding style

8639-227 | '14-'24 ZR, '13 F 129"; '16-'24 ZR, Thundercat, '16-'18 XF CrossTrek, '14-'15 XF 137"; '20-'23 Riot, '15-'19 Pantera, XF CrossTour 146" 2.86 P (2-PLY)



TRACK MARKER

- Ensures track pattern aligns perfectly with stud template

1639-520



STUD DRILL

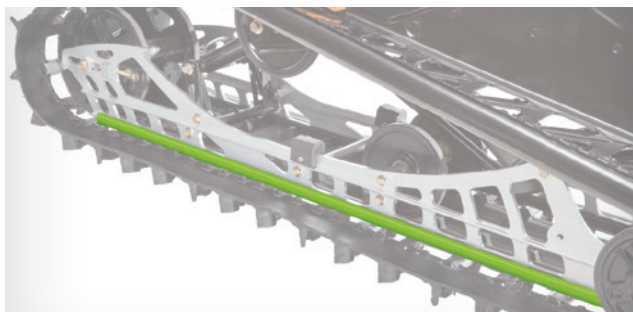
- Cuts cleanly for precise stud locations

1639-629 | 5/16"

MAINTENANCE



FEATURED ON SLED:
8639-516 EVO FRONT BUMPER - SKYE BLUE



WEAR STRIPS

- Sold individually
- Add a dash of color to your slide rails

4604-402 MEDIUM GREEN | 121-129" Models

4604-404 MEDIUM GREEN | 137" Models

4604-406 MEDIUM GREEN | 141-153" Twin Rail Models

4604-408 MEDIUM GREEN | 162" Twin Rail Models

4604-405 ORANGE | 121-137" Models

4604-407 ORANGE | 141-153" Twin Rail Models

4604-409 ORANGE | 162" Twin Rail Models



4.3A BATTERY CHARGER

- Special cold-weather performance and adapted AC and DC cables to handle severe cold down to -22°F (-30°C)
- Features four modes: LOW CURRENT MODE for smaller 12V batteries used in snowmobiles, ATV/UTV HIGH CURRENT MODE for automotive or marine applications, WINTER MODE for charging and maintenance in cold weather, RECONDITIONING MODE for deeply discharged batteries
- Fully automatic for charging and maintenance
- Features a patented method for reconditioning sulfated batteries
- Spark-free, making connection safer and easier
- Includes alligator clips and ring terminal leads

NOT SOLD INTERNATIONAL



0.8A BATTERY CHARGER

- The ideal maintenance charger for 12V batteries
- Fully automatic for charging and maintenance
- Takes its own readings and begins to charge
- Once finished charging, it will switch to a maintenance phase
- Features a patented method for reconditioning sulfated batteries
- Spark-free, making connection safer and easier
- Extends battery life
- Includes alligator clips and ring terminal leads
- 12V, 0.8A

NOT SOLD INTERNATIONAL



1.5A BATTERY MAINTAINER

- Fully-automatic maintainer for powersports batteries
- Automatic voltage detection
- Reverse hook-up protection
- Includes alligator clips and ring terminal leads
- 12V, 1.5A

NOT SOLD INTERNATIONAL



BATTERY JUMP PACK

- Quickly start your snowmobile or ATV/UTV
- Lightweight, long-lasting 8,000 mAh lithium ion power source
- Features LCD display, two USB power/charging ports, a 2.1A for tablets, a 1A for mobile phones, and a powerful 3-mode LED light
- Cranking current: 400A peak, 200A cranking
- Includes smart cables and a USB charging cord

NOT SOLD INTERNATIONALLY



JUMP PACK POUCH

- Protective zip pouch for 2436-980 Battery Jump Pack
- Prevents loose components from becoming lost or damaged

NOT SOLD INTERNATIONALLY



BELT TOOL

- This tool is used to expand the driven clutch to aid in changing the drive belt and adjusting deflection (Certain models)

0644-659 | '16-'24 5/6/7/8/9000 MODELS **BEST SELLER**

0644-662 | '21-'24 4000; '15-'23 R SX; '15-'21 R XC;
'04-'14 SNO PRO MODELS **BEST SELLER**



DRIVE CLUTCH PULLER

- Use to remove the drive clutch for service or calibration adjustment
- Built from hardened steel for superior durability
- Metric puller features a blue coating for easy identification

0744-080 METRIC | '14-'24 2/3/4/5/6/7/8/9000; '10-'13 500, 570, 600, 800, 1100, 1100T;
'07-'11 1000 MODELS **BEST SELLER**

0644-207 STANDARD | UNIVERSAL '97-'09 (EXCEPT '07-'09 1000 MODELS)



FOX FLOAT DIGITAL PUMP

- Easily adjust FOX Float air pressure in the shop or on the trail
- Convenient digital display reads 0-300 psi
- Replaceable battery

7639-121 | ALL FOX FLOAT SHOCKS



FOX FLOAT DUAL GAUGE PUMP

- Easily adjust FOX Float air pressure in the shop or on the trail
- Primary gauge reads 0-300 PSI, secondary gauge reads 0-150 PSI
- No battery required

0641-257 | ALL FOX FLOAT SHOCKS



TRACK TENSION TOOL

- Maintain your track tension for optimum performance

7639-153 | UNIVERSAL



EXHAUST SPRING TOOL

- Easily remove the springs securing the expansion chamber and resonator
- Provides wide-open access to service the engine and other underhood components

0644-554 STANDARD 6" | Universal

6639-904 HEAVY-DUTY 16" | Universal



EXHAUST VALVE CABLE GAUGE

- This tool is used to check Arctic Power Valve (APV) cable adjustment
- Ensure optimal exhaust valve operation for smooth, responsive engine performance

8639-126 | '10-'24 800/8000; '14-'24 6000 MODELS



ENGINE REBUILD KITS

- Give your Cat another life with everything needed to refresh your engine
- Piston + ring assemblies
- Wrist pins + bearings + shims
- Top end gasket set
- Spark plugs

8639-238 | '10-'17 800/8000 MODELS

8639-239 | '14-'19 6000 MODELS

8639-240 | '18-'19 8000 MODELS



DRIVELINE REBUILD KIT

- Keep your ProCross, ProClimb, or Ascender sled rolling smoothly and efficiently with a complete drive bearing kit
- LH + RH jackshaft bearings
- LH + RH driveshaft bearings
- Hardware and instructions

8639-489 | '15-'24 8000; '15-'23 6000; '15-'16 4/5/9000 MODELS

8639-491 | '17-'24 7/9000 MODELS (EXCEPT XT)

8639-490 | '21-'24 4000; '15-'16 7000; '16-'19 3000 MODELS

8639-488 | '14 5/6/8/9000; '12-'13 800/1100 MODELS

BELTS

- « Custom fit to match each Arctic Cat sled and specific use
- « Better contact with clutch surface and faster acceleration from double cogs
- « Increase belt life by running cooler than aftermarket belts
- « Premium reinforced with Aramax® aramid fibers for strength and durability
- « Increased power transmission with less slip
- « Kevlar® drive belts available for high performance models, which dramatically extend belt life and sustain belt length better than traditional cords

NOTE: Proper break-in period required.

PREMIUM ARCTIC CAT "EXTENDED-LIFE" ORIGINAL EQUIPMENT REPLACEMENT BELTS

Don't settle for anything less than a drive belt built specifically for your sled. Proven through extensive lab and field testing, original equipment Arctic Cat replacement belts are precision-engineered for each Arctic Cat snowmobile.

CUSTOM-ENGINEERED FIT

While non-OEM aftermarket belts offer "one construction fits all," Arctic Cat Research & Development custom engineers each genuine Arctic Cat belt to match the specific performance characteristics of your sled. This produces the best combination of strength, durability and responsiveness for lower-horsepower, fan-cooled sleds all the way up to high-horsepower muscle sleds. Each one is built using only state-of-the-art materials, incorporating precision manufacturing techniques to meet exacting tolerances.

TOP & BOTTOM COGS

Arctic Cat original equipment belts are double coggled, so more of the belt contacts the clutch surfaces. This results in faster acceleration, maximum efficiency and superb overall performance. Double-cog design provides structure while adding surface area for greater cooling and longer life. In fact, our belt runs cooler than flat-top aftermarket belts.

ARAMAX HIGH-MODULUS ARAMID-FIBER TENSILE MEMBER

The Aramax inner cord provides incredible strength and durability for high-horsepower, high-performance sleds. In addition, each belt is chemically treated for maximum power transmission and length stability.

HIGH-PERFORMANCE PREMIUM COMPOUNDS

Arctic Cat's OEM belts incorporate advanced premium compound materials that ensure optimum belt performance under all riding conditions. The advanced aramid-fiber-loaded rubber compound resists wear and delivers consistent power while minimizing slippage over a broad range of operating temperatures. The thicker, highly flexible design increases grip to clutch surfaces for increased power transmission.

ARCTIC CAT KEVLAR DRIVE BELTS

These ultimate-performance Arctic Cat Kevlar drive belts are custom engineered for high performance models. Extended-life belts feature top- and bottom-molded cog construction and high-performance compounds. Inside, the Kevlar cord provides increased belt life. Please note that proper belt "break-in" is required.



2003

BEARCAT W/T	0627-033
F5	0627-020
F7	0627-020/035
4-STROKE TOURING/TRAIL	0627-013
MOUNTAIN CAT	0627-020
PANTERA 550	0627-021
PANTERA (EFI)	0627-020
PANTHER	0627-021
Z	0627-021
ZL	0627-020
ZR	0627-020/035

2004

BEARCAT 570	0627-013
BEARCAT W/T	0627-033
F5	0627-020
F6/7	0627-031
KING CAT	0627-020
MOUNTAIN CAT	0627-020
PANTERA 550	0627-021
PANTERA (EFI)	0627-020
PANTHER	0627-021
SABERCAT 500	0627-020
SABERCAT 600/700	0627-031
T660 TOURING	0627-021
T660 TURBO	0627-028
Z	0627-021
ZR	0627-033

2005

BEARCAT 570	0627-013
BEARCAT W/T	0627-033
F5/6/7	0627-034
KING CAT	0627-020
M5/6/7	0627-036
PANTERA 550	0627-021
PANTERA 600	0627-020
PANTHER	0627-021
SABERCAT 500	0627-020
SABERCAT 600/700	0627-035
T660 TOURING	0627-021
T660 TURBO	0627-028
Z	0627-021
ZR 900	0627-032

2006

BEARCAT 570	0627-013
BEARCAT W/T	0627-033
BEARCAT W/T TURBO	0627-049
CROSSFIRE	0627-036
F5	0627-044
F6	0627-020
F6/7 (W/O REVERSE)	0627-044
F7	0627-035
KING CAT	0627-020
M5/6/7	0627-036
PANTHER 370/570	0627-021
PANTHER 660	0627-013
SABERCAT 500/600	0627-020
SABERCAT 700	0627-035
T660 TOURING	0627-013
T660 TURBO	0627-048
Z	0627-021
ZR 900	0627-045

2007

BEARCAT 570	0627-013
BEARCAT W/T	0627-033
BEARCAT W/T TURBO	0627-049
CROSSFIRE 5/6/8/1000	0627-046
F5/6/8/570	0627-046
F1000	0627-060
JAGUAR Z1	0627-047
M6/8/1000	0627-046
PANTHER 370/570	0627-021
PANTHER 660	0627-013
T660 TOURING	0627-013
T660 TURBO	0627-048
Z	0627-021

2008

BEARCAT 570	0627-013
BEARCAT W/T	0627-033
BEARCAT W/T TURBO	0627-049
CROSSFIRE 5/6/8	0627-046
CROSSFIRE 1000	0627-060
F5/6/8/570	0627-046
F1000	0627-060
JAGUAR Z1	0627-047
M6/8	0627-046
M1000	0627-060
PANTHER 370	0627-021
PANTHER 660	0627-013
600 SNO PRO	0627-073
T500/T570	0627-046
TZ1	0627-047

2009

BEARCAT 570	0627-067
BEARCAT 570 XT	0627-046
BEARCAT Z1 XT	0627-047
CROSSFIRE 500	0627-067
CROSSFIRE, R 6/8	0627-046
CROSSFIRE, R 1000	0627-060
F5/570	0627-067
F6/8	0627-046
F1000 SNO PRO	0627-060
M6/8	0627-046
M1000	0627-060
600 SNO PRO SX	0627-070
600 SNO PRO XC	0627-073
T500/570	0627-067
TZ1	0627-047
TZ1 TURBO	0627-066
Z1	0627-047
Z1 TURBO	0627-066

2010

BEARCAT 570	0627-067
BEARCAT 570 XT	0627-046
BEARCAT Z1 XT	0627-047
CROSSFIRE 6	0627-046
CROSSFIRE, CFR 8/1000	0627-060
F5/570	0627-067
F6/8	0627-046
M6/8	0627-046
M1000	0627-060
SNO PRO 500	0627-047
SNO PRO 600 SX	0627-075
SNO PRO 600 XC	0627-076
T570	0627-067
TZ1	0627-069
TZ1 TURBO	0627-073
Z1	0627-069
Z1 TURBO	0627-073

2011

BEARCAT 570	0627-067
BEARCAT 570 XT	0627-046
BEARCAT Z1 XT	0627-047
CROSSFIRE 6	0627-046
CROSSFIRE, CFR 8/1000	0627-060
F5/570	0627-067
F6/8	0627-046
M6/8	0627-046
M1000	0627-060
SNO PRO 500	0627-047
SNO PRO 600 SX	0627-075

2011 (CONTINUED)

SNO PRO 600 XC	0627-076
T570	0627-067
TZ1	0627-069
TZ1 TURBO	0627-073
Z1	0627-069
Z1 TURBO	0627-073

2012

BEARCAT 570	0627-067
BEARCAT 570 XT	0627-046
BEARCAT Z1 XT	0627-047
F5/570	0627-067
F 800	0627-083
F 1100	0627-081
F 1100 TURBO	0627-082
M 800	0627-084
M 1100	0627-081
M 1100 TURBO	0627-082
SNO PRO 500	0627-047
SNO PRO 600	0627-085
T570	0627-067
TZ1	0627-069
TZ1 TURBO	0627-082
XF 800	0627-083
XF 800 HIGH COUNTRY	0627-084
XF 1100	0627-081
XF 1100 TURBO	0627-073

2013

BEARCAT 570	0627-067
BEARCAT 570 XT	0627-046
BEARCAT Z1 XT	0627-047
F5/570	0627-067
F 800	0627-083
F 1100	0627-081
F 1100 TURBO	0627-082
M 800	0627-084
M 1100	0627-081
M 1100 TURBO	0627-082
SNO PRO 500	0627-047
SNO PRO 600	0627-086
T570	0627-067
TZ1	0627-069
TZ1 TURBO	0627-073
XF 800	0627-083
XF 800 HIGH COUNTRY	0627-084
XF 1100	0627-081
XF 1100 TURBO	0627-082

2014	
BEARCAT 570	0627-067
BEARCAT 570 XT	0627-046
BEARCAT Z1 XT	0627-047
BEARCAT GS	0627-073
F5/570	0627-067
M 6000	0627-083
M 8000	0627-084
M 9000	0627-082
SNO PRO 500	0627-047
T570	0627-067
TZ1	0627-069
XF 7000	0627-070
XF 8000	0627-083
XF 8000 HIGH COUNTRY	0627-084
XF 9000	0627-082
ZR 5000	0627-081
ZR 6000	0627-083
ZR 6000R	0627-086
ZR 7000	0627-070
ZR 8000	0627-083
ZR 9000	0627-082
2015	
BEARCAT 2000	0627-067
BEARCAT 2000 XT	0627-046
BEARCAT 5000 XT	0627-047
BEARCAT GS	0627-073
LYNX 2000	0627-067
M 6000	0627-083
M 8000	0627-084
M 9000	0627-082
PANTERA 7000	0627-069
XF 7000	0627-070
XF 8000	0627-083
XF 8000 HIGH COUNTRY	0627-084
XF 9000	0627-082
ZR 4000	0627-083
ZR 5000	0627-081
ZR 6000	0627-083
ZR 6000 R-SX	0627-086
ZR 7000	0627-070
ZR 8000	0627-083
ZR 9000	0627-082
2016	
BEARCAT 2000 LT	0627-067
BEARCAT 2000 XT	0627-046
BEARCAT 3000 LT	0627-081
BEARCAT 7000 XT	0627-102

2016 (CONTINUED)	
LYNX 2000	0627-067
M 6000	0627-083
M 7000	0627-070
M 8000	0627-084
M 9000	0627-082
PANTERA 3000	0627-081
PANTERA 7000	0627-070
PANTERA 7000 XT	0627-102
XF 6000	0627-070
XF 7000	0627-070
XF 8000	0627-083
XF 8000 HIGH COUNTRY	0627-084
XF 9000	0627-082
ZR 4000	0627-083
ZR 5000	0627-081
ZR 6000	0627-083
ZR 6000 R-SX	0627-086
ZR 7000	0627-070
ZR 8000	0627-083
ZR 9000	0627-082
2017	
BEARCAT 2000 LT	0627-067
BEARCAT 2000 XT	0627-046
BEARCAT 3000 LT	0627-081
BEARCAT 7000 XT	0627-102
LYNX 2000	0627-067
M 6000	0627-083
M 8000	0627-084
PANTERA 3000	0627-081
PANTERA 7000	0627-070
PANTERA 7000 XT	0627-102
XF 6000	0627-083
XF 7000	0627-070
XF 8000	0627-084
XF 9000	0627-112
ZR 3000	0627-081
ZR 4000	0627-083
ZR 5000	0627-081
ZR 6000	0627-083
ZR 6000 R-SX	0627-086
ZR 7000	0627-070
ZR 8000	0627-084
ZR 9000	0627-112
2018	
BEARCAT 2000 LT	0627-067
BEARCAT 7000 XT	0627-102

2018 (CONTINUED)	
BEARCAT XT	0627-114
LYNX 2000	0627-067
M 6000	0627-107
M 8000	0627-111
M 9000	0627-112
NORSEMAN 3000	0627-081
NORSEMAN 6000	0627-107
PANTERA 3000	0627-081
PANTERA 6000	0627-107
PANTERA 7000	0627-110
PANTERA 7000 XT	0627-102
XF 6000	0627-107
XF 7000	0627-110
XF 8000	0627-111
XF 9000	0627-112
ZR 200	0627-106
ZR 3000	0627-081
ZR 6000	0627-107
ZR 6000 R-SX	0627-086
ZR 7000	0627-110
ZR 8000	0627-111
ZR 9000	0627-112
2019	
BEARCAT 7000 XT	0627-102
LYNX 2000	0627-067
M 6000	0627-107
M 8000	0627-111
M 9000	0627-112
NORSEMAN 3000	0627-081
NORSEMAN 6000	0627-107
NORSEMAN 8000	0627-111
PANTERA 3000	0627-081
PANTERA 7000	0627-110
PANTERA 7000 XT	0627-102
XF 6000	0627-107
XF 8000	0627-111
XF 9000	0627-112
ZR 200	0627-106
ZR 3000	0627-081
ZR 6000	0627-107
ZR 6000 R-SX	0627-120
ZR 7000	0627-110
ZR 8000	0627-111
ZR 9000	0627-112

2020

LYNX 2000	0627-067
M 6000	0627-107
M 8000	0627-111
RIOT 6000	0627-107
RIOT/X 8000	0627-111
ZR 200	0627-106
ZR 6000	0627-107
ZR 8000	0627-111
ZR 9000	0627-112

2021

BLAST 4000	0823-683
M 8000	0627-111
NORSEMAN X 8000	0627-111
RIOT 6000	0627-107
RIOT/X 8000	0627-111
ZR 200	0627-106
ZR 6000	0627-107
ZR 6000 R-SX	0627-120
ZR 8000	0627-111
ZR 9000	0627-112

2022

BLAST 4000	0823-683
M 8000	0627-111
NORSEMAN X 8000	0627-111
RIOT 6000	0627-107
RIOT/X 8000	0627-111
ZR 200	0627-106
ZR 6000	0627-107
ZR 6000 R-SX	0627-120
ZR 8000	0627-111
ZR 9000	0627-112

2023

BLAST 4000	0823-683
M 8000	0627-111
NORSEMAN X 8000	0627-111
RIOT/X 8000	0627-111
RIOT 9000	0627-112
ZR 200	0627-106
ZR 6000	0627-107
ZR 6000 R-SX	0627-120
ZR 8000	0627-111
ZR 9000	0627-112

2024

BLAST 4000	0823-683
M 600	0627-131
M 8000	0627-111
NORSEMAN X 8000	0627-111
PANTERA 7000	0627-110
RIOT 600	0627-131
RIOT/X 8000	0627-111
RIOT 9000	0627-112
ZR 200	0627-106
ZR 600	0627-131
ZR 6000 R-SX	0627-120
ZR 7000	0627-110
ZR 8000	0627-111
ZR 9000	0627-112

OIL & CARE



C-TEC2™ SYNTHETIC OIL

The C-TEC2 revolutionary clean-burning engine technology demands an entirely unique oil formulation. This lubrication system effectively delivers oil where it is required — as a result using significantly less oil compared with traditional 2-cycle engines. This technology requires a unique viscosity and blend of additives and base stocks. After several years of intense testing, numerous formulations, thousands of dyno hours and hundreds of thousands of field test miles, we landed on this unique oil technology.

- The **ONLY** oil recommended for the C-TEC2 engine, but approved for ALL Arctic Cat 2-cycle engines
- Reduction in recoil pull-effort during cold weather starting
- Convenient C-TEC2 oil packaging provides easier pourability and less waste
- Fully synthetic formulation provides ultimate engine protection
- Detergent additives maximize Arctic Power Valve™ and engine cleanliness
- Smokeless formulation burns extremely clean with a fresher scent

7639-867

1 GALLON **BEST SELLER**

6639-840

2.5 GALLONS

2-STROKE OIL



APV™ SYNTHETIC OIL

- Outstanding performance for all non-C-TEC2 Arctic Cat 2-cycle engines
- Protects against engine wear with excellent lubricity
- Provides excellent Arctic Power Valve cleanliness
- Smokeless formulation burns clean
- Helps prevent piston scuffing, varnish formation and deposit buildup



6639-152 1 GALLON

6639-909 2.5 GALLONS

FORMULA 50 OIL

- Mineral based 50:1 injection oil is recommended for non-Arctic Power Valve 2-cycle engines
- Performs well over a wide range of operating temperatures
- Minimizes engine wear
- Prevents rust/deposit formation



6639-153 1 GALLON

C-TEC4™ SYNTHETIC OIL & CHANGE KITS

- Provides superior performance in ALL operating conditions, including in the extreme cold
- Synthetic base stocks offer high lubricity that protects engine from wear and scuffing
- Exclusive formulation includes additives that help prevent deposit formations, ring sticking and engine wear
- Includes one gallon of synthetic C-TEC4 oil, oil filter, O-ring washer and disposable funnel

6639-547 1 GALLON (OIL ONLY)

6639-549 '17-'24 9000 MODELS (998CC 3-CYL); '14-'24 7000 MODELS (1049CC 3-CYL)

6639-548 '07-'16 1100/1100T, 5/9000 MODELS (1056CC 2-CYL)

7639-043 '15-'19 3000 MODELS (700CC 2-CYL)

4-STROKE OIL





SYNTHETIC ACT GEARCASE FLUID

- Specially formulated for the ACT drive system
- Full synthetic lubricant that stays consistent across a broad temperature range so it flows well when cold and won't break down when hot
- Protects against wear and corrosion in ACT drive systems with reverse

6639-150 | 27.1 OZ.



ACT™ DRIVE FLUSH FLUID

- Flush ACT gearcase to remove contaminants and wear particles before replacing ACT gearcase fluid

5639-847 | 1 GALLON.



ARCTIC CAT ANTIFREEZE - 60/40 EXTENDED LIFE

- Premixed and ready to pour
- Protects against freezing to -62°F and has boiling point of 270°F
- Bitterant additive reduces likelihood of animal ingestion
- Extended-life antifreeze 3 times longer service life

2436-875 | GALLON



ARCTIC CAT EXTREME LOW TEMP GREASE

- Premium synthetic base makes Arctic Cat Low-Temp Grease perform in extreme winter conditions, -40°F to 300°F
- Keeps contaminants from entering and damaging suspension components
- Exceptional cold temp bearing and pivot point performance

7639-517 | 10 OZ.



SEMI-SYNTHETIC SHOCK OIL

- Engineered with a high viscosity index (VI) formulation
- Provides superior, consistent performance in severe operating and racing conditions
- Protects against wear, foaming, oxidation and corrosion

6639-908 | QUART





SPARK PLUG CADDY

0636-054 MEDIUM GREEN | UNIVERSAL **BEST SELLER**



CAT CADDY

- Superior mobility from 2.5-in. swivel casters
- Includes two ski dollies and a track dolly

5639-873 PLASTIC - BLACK |

5639-874 PLASTIC - GREEN | **BEST SELLER**

4639-766 ALUMINUM - BLACK |

REPLACEMENT PARTS

0641-535 REPLACEMENT WHEEL | FITS CAT CADDY



DASH CADDY

- Dash storage with sturdy polyethylene construction
- Compartment door features a foam seal to keep contents safe and dry
- Not compatible with Mid Performance windshield

8639-219 | '18-'24 8000; '18-'23 6000; '17-'24 9000; '14-'24 7000; '17-'19 3000 Models

TOUCH-UP PAINT

- Repair scratches and keep your Cat looking like new with genuine, factory color touch-up paint
- Available in 1/2 OZ (15 ML) bottle or 12 OZ (354 ML) aerosol
- See your dealer for specific vehicle application and complete details

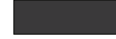
BALLISTIC BRONZE



0652-240 0.5 OZ | '20 MODELS

0652-241 12 OZ | '20 MODELS

BLACK



0652-100 0.5 OZ | UNIVERSAL (PLASTIC)

0652-110 0.5 OZ | '00-'17 MODELS

0652-024 12 OZ | '00-'17 MODELS

0652-228 0.5 OZ | '18-'24 MODELS

0652-229 12 OZ | '18-'24 MODELS

BLACK MAGIC



0652-276 0.5 OZ | '23-'24 MODELS **NEW**

0652-277 12 OZ | '23-'24 MODELS **NEW**

CAT GREEN



0652-077 12 OZ | '98-'11 MODELS

DYNAMIC CHARCOAL



0652-242 0.5 OZ | '20-'22 MODELS

0652-243 12 OZ | '20-'22 MODELS

DYNAMIC GRAY



0652-222 0.5 OZ | '17-'21 MODELS

0652-223 12 OZ | '17-'21 MODELS

ELECTRIC BLUE



0652-248 0.5 OZ | '20 MODELS

0652-249 12 OZ | '20 MODELS

FIRE RED



0652-218 0.5 OZ | '17-'24 MODELS

0652-219 12 OZ | '17-'24 MODELS

GALAXY BLUE



0652-278 0.5 OZ | '14-'24 MODELS **NEW**

0652-279 12 OZ | '14-'24 MODELS **NEW**

HYPER GREEN



0652-244 0.5 OZ | '20-'22 MODELS

0652-245 12 OZ | '20-'22 MODELS

MEDIUM GREEN



0652-220 0.5 OZ | '17-'24 MODELS

0652-221 12 OZ | '17-'24 MODELS

ORANGE



0652-141 0.5 OZ | '08-'24 MODELS

0652-142 12 OZ | '08-'24 MODELS

PEARL CAT GREEN



0652-144 0.5 OZ | '08-'13 MODELS

0652-145 12 OZ | '08-'13 MODELS

PHANTOM GRAY



0652-260 0.5 OZ | '23 MODELS

0652-261 12 OZ | '23 MODELS

PLATINUM



0652-096 12 OZ | '02-'11 MODELS

PURPLE



0652-238 0.5 OZ | '19 MODELS

0652-239 12 OZ | '19 MODELS

QUICKSILVER



0652-250 0.5 OZ | '20 MODELS

0652-251 12 OZ | '20 MODELS

SKYE BLUE



0652-246 0.5 OZ | '21-'24 MODELS

0652-247 12 OZ | '21-'24 MODELS

SPARK ORANGE



0652-256 0.5 OZ | '23 MODELS

0652-257 12 OZ | '23 MODELS

STAR WHITE



0652-280 0.5 OZ | '24 MODELS **NEW**

0652-281 12 OZ | '24 MODELS **NEW**

SUNSET ORANGE



0652-148 0.5 OZ | '14-'24 MODELS

0652-149 12 OZ | '14-'24 MODELS

TEAM ARCTIC GREEN



0652-199 0.5 OZ | '14-'18 MODELS

0652-200 12 OZ | '14-'18 MODELS

TRUE PLATINUM



0652-266 0.5 OZ | '23 MODELS **NEW**

0652-267 12 OZ | '23 MODELS **NEW**

WHITE



0652-189 0.5 OZ | '14-'24 MODELS

0652-190 12 OZ | '14-'24 MODELS

Colors shown are approximation - contact your dealer with questions.

TRAIL



Born on the trail, we live for winding rides,
high speeds and all-out adventure.



INDEX

A low-angle, silhouette photograph of a person wearing a hoodie, standing against a bright sunset sky. The person's head is tilted back, and their hand is near their face. In the foreground, the dark, angular shape of a car's hood is visible, featuring a light-colored lightning bolt decal. The background shows a clear orange and yellow sky with some blurred green foliage on the left. A diagonal teal-colored graphic element cuts across the left side of the image.



0.8A BATTERY CHARGER	87
1.5A BATTERY MAINTAINER	87
2-PLY TRACKS	83
4.3A BATTERY CHARGER	87
60/40 EXTENDED LIFE	
A	97
A-2 EXT SHOVEL	72
ACCESSORY LATCHING SYSTEM	20
ACE WEARBARS	82
ACT DRIVE FLUSH FLUID	96
ADJUSTABLE BAR RISER	44
ADVANTAGE COVERS	9
ALPHA ONE REAR ARM BOLT KIT	48
ALPHA ONE TRACK + DRIVER UPDATE KIT	75
APV SYNTHETIC OIL	95
ARCTIC CAT ANTIFREEZE	97
ARCTIC CAT EXTREME	96
ARCTIC CAT IFP	60
ARCTIC CAT IFP PACKAGES	60
ASCENDER PRO SEAT	64
ASCENDER RUNNING BOARDS	64
ATACH BASE KIT	21
ATACH HIGH COUNTRY PACK	21
ATACH PASSENGER SEAT	37
ATACH SADDLEBAGS	21
ATACH TUNNEL PACK	21
B	
BACKCOUNTRY ACCESS	68
BACKCOUNTRY X	74
BAGS & STORAGE	19
BAR RISERS	44
BATTERY JUMP PACK	88
BC LINK 1.0 RADIO	71
BC LINK 2.0 RADIO	71
BC LINK REPLACEMENT BATTERY	71
BELT TOOL	88
BILLET AXLE WASHERS	66
BILLET BRAKE LEVER	62
BILLET RECOIL HANDLE	65
BILLET TUNNEL RACK	27
BUMPERS	28

C

C-TEC4 SYNTHETIC OIL & CHANGE KITS	95
CANVAS COVERS	10
CARBIDE WEARBARS	55
CARGO BAG	25
CATALYST HITCH KIT	40
CATALYST SKI HANDLES	79
COBRA	72
COVER - YOUTH	53
CUSTOM CANVAS COVERS	11
CUSTOM HANDLEBAR BAG	24
CUSTOMIZATION	4

D

D-2 EXT SHOVEL	72
DASH CADDY	23
DEUCE TWIN CARBIDE WEARBARS	83
DIGGER (2-PLY) SUPPORT PLATES	84
DOOLY TWIN CARBIDE WEARBARS	83
DOT 4 BRAKE FLUID	97
DOUBLE DIGGER (2-PLY) SUPPORT PLATES	84
DOZER 1T SHOVEL	71
DRIVE CLUTCH PULLER	88
DRIVELINE REBUILD KIT	89

E

ELECTRIC START KITS	39
ENGINE PERFORMANCE KIT - YOUTH	55
ENGINE REBUILD KITS	89
EVO FRONT BUMPER	29
EVO REAR BUMPER	30
EXHAUST SPRING TOOL	89
EXHAUST VALVE CABLE GAUGE	89
EXTREME LOW	16
EXTREME-DUTY BRAKE DISC	63

F

FIXED VERTICAL STEERING POST	45
FLEX-TEC HAND GUARDS	43
FLEX-TEC HAND GUARDS - YOUTH - YOUTH	53
FLEX-TEC LITE HAND GUARDS	43
FLOAT 15 TURBO	69
FLOAT 2.0 AIR CYLINDER	69
FLOAT 25 TURBO	69
FLOAT MTNPRO 2.0 VEST	69
FORMULA 50 OIL	95
FOUR WHEEL KIT	66

FOX FLOAT 3 QSL	60
FOX FLOAT DIGITAL PUMP	88
FOX FLOAT DUAL GAUGE PUMP	88
FOX FLOAT GUARD KIT	61
FOX FLOAT QS3	60
FOX ZERO QS3	60
FOX ZERO QS3R	60
FRONT SUSPENSION KIT	80
FUEL TREATMENT	97
FULL SEND KIT	6

G

GARMIN	32
GEARCASE FLUID	96
GOLD DIGGER TRACTION MASTER (2-PLY) TRACTION KITS	84
GPS INSTALL KITS	32
GRAND MASTER (SINGLE-PLY)	84
GRIP-IT GLUE	45

H

HACKSAW	74
HALF COVER	11
HAND GUARD EXTENSIONS	44
HAND GUARD LIGHT KIT	43
HAND WARMERS - YOUTH	54
HANDLEBAR BAG - YOUTH	53
HANDLEBAR SWITCH GUARDS	45
HANDLEBARS	42
HANDLING & TRACTION	78
HARD SADDLEBAGS	25
HARDCORE RUNNING BOARDS	63
HEATED GOGGLE BAG	24
HEATED SEAT	38
HEATED SEAT KITS	38
HEATED SHIELD ADAPTER	39
HEATED SHIELD OUTLET	38
HEAVY-DUTY BRAKE DISC	63
HEAVY-DUTY SUSPENSION KIT - YOUTH	54
HIGH TOURING WINDSHIELD	17
HIGH WINDSHIELD	53
HITCH KITS	41

I

ICE SCRATCHERS	62
ICE TRACK - YOUTH	55

J

JUMP PACK POUCH	88
-----------------	----

L

LAYDOWN STEERING POST	44
LED HEADLIGHT	65
LOW PROFILE TUNNEL RACK	27
LOW SNO PRO	16
LOW TEMP GREASE	96

M

MAVERICK WEARBARS	82
MID LXR	17
MID PERFORMANCE	18
MID PERFORMANCE	16
MID TOURING	17
MID TOURING	16
MOUNTAIN HANDLEBAR	45
MOUNTAIN PACK	23
MOUNTAIN SHOVEL PACK	23
MOUNTAIN TUNNEL PACK	23
NUMBER PLATE KIT	65

O

OIL & CARE	
OVERLOAD KITS	40

P

PANEL VENT KIT	65
PANTERA HANDLEBAR BAG	24
PASSENGER HAND WARMERS	38
PASSENGER MUFFS	38
PASSENGER SEAT	37
PASSENGER SEAT	37
PASSENGER SEAT	37
PASSENGER WIND DEFLECTORS	38
POLYESTER COVERS	10
POWER CLAW	74
POWER CLAW	74
PREMIUM COVERS	9
PREMIUM GPS KIT	32
PRO BUMPER	29
PRO KIT	6
PRO MTN BUMPER	29
PRO MTN CAP	65
PRO MTN REAR BUMPER	30
PRO MTN RUNNING BOARDS	64
PRO MTN WINDSHIELD	16

PROCLIMB BUMPER	29
PROCLIMB-7 G2 SKIS	79
PROCROSS CAP	65
PROCROSS GRIPS	45
PROCROSS HAND GUARDS	43
PROCROSS LIGHTED HAND GUARDS	43
PROCROSS REAR BUMPER	30
PROCROSS-6 SKIS	79
PROUTE-10/8 SKIS	79
R	
RACING BRAKE PAD SET	63
RACING TAPE	66
RACK STRAP	27
RAIL CAP WHEEL KIT	67
RATTLER	72
REAR SUSPENSION SPRINGS	80
REAR WHEEL KIT	66
RIPSAW	74
RIPSAW II	74
RUFFIAN GRIPS	45
RUNNING BOARD GRIPS	54
RUNNING BOARD TRACTION	64
S	
SEMI-SYNTHETIC	96
SHAPER WEARBARS	82
SHOCK OIL	96
SIGNATURE SERIES (2-PLY)	84
SIGNATURE SERIES STAINLESS STEEL (2-PLY)	84
SINGLE RUNNER	82
SINGLE-PLY TRACKS	83
SKI HANDLES	80
SKID PLATES	47
SKID WHEEL KIT - YOUTH	55
SLP MOHAWK SKIS	79
SLP POWDER PRO SKIS	79
SLP WEARBARS (PAIR)	82
SNO PRO BRAKE LEVER	63
SNOCROSS HANDLEBAR KIT	54
SNOWFLAP	47
SPEEDLOCK	26
SPEEDLOCK COVER	26
SPEEDOMETER KIT - YOUTH	54
SPEEDRACK BASE KIT	25
SPEEDRACK CARGO BOX	26

SPEEDRACK CARGO RACK	26
SPEEDRACK GEAR BAG	25
SPEEDRACK GEAR RACK	25
SPEEDRACK II SYSTEM	25
SPEEDWERX CLUTCH KITS -YOUTH	55
SPEEDWERX HYPERSHIFT CLUTCH KITS	62
STAGGERED WEARBARS	83
STANDARD GPS KIT	32
STARTER KIT	7
STEALTH 270	70
STORAGE	19
STORAGE COVER	9
STUD DRILL	85
STUD TEMPLATE	85
SYNTHETIC ACT	96
SYNTHETIC CHAIN LUBE	96
SYNTHETIC SHOCK OIL	96
T	
TANK BAG	24
TANK PADS	47
TEAM ARCTIC HAND GUARDS	53
TETHER SWITCH	48
TETHER SWITCH -YOUTH	54
TIGER SLIDE WEAR STRIPS	62
TOUCH UP PAINT	98
TOURING MUFFS	44
TOW HITCH	41
TOW ROPE	41
TOW STRAP	41
TRACK MARKER	85
TRACK TENSION TOOL	89
TRACKER 3	70
TRACKER S	70
TRACTION KIT - YOUTH	55
TRAIL BLAZER KIT	5
TRAIL PACK	22
TREAD GPS KITS	32
TUNNEL CARGO BAG WITH SADDLEBAGS	25
TUNNEL FLARES	47
TUNNEL GEAR BAG	22
TUNNEL GRIPS	64
TUNNEL PACK	22
TUNNEL PACK -YOUTH	53
TUNNEL PAD	27

TUNNEL PROTECTOR KIT	85
TUNNEL PROTECTOR KIT - YOUTH	55
TUNNEL RACK	26
TUNNEL REINFORCEMENT KIT	48
TWIN RAIL BRACE KIT	48
U	
UTILITY	40
W	
WEAR STRIPS	87
WHEEL KITS	67
WINDSHIELD BAG	23
WINDSHIELD DART	18
WINDSHIELD HARDWARE KIT	18
WINDSHIELD RETAINER	18
WINDSHIELDS	14
WINTER ESSENTIALS KIT	7
WINTER ESSENTIALS KIT	7
X	
XC MUFFS	44
XC WINDSHIELD	16
XL TUNNEL GEAR BAG	22
Y	
YOUTH	52





All specifications, competitive specifications, claims and information contained within are based on current knowledge and readily available printed material available as of January 1, 2023. All rights reserved. Cobra™ and Ripsaw™ are trademarks of Camso Inc. FOX®, FOX FLOAT® and FOX® ZERO are registered trademarks of FOX Racing Shox. Garmin is a trademark of Garmin Ltd. or its subsidiaries. ADAPT™, Alpha One®, Arctic Cat®, Arctic Mountain Suspension™, Arctic Race Suspension™, ARS™, Ascender™, Arctic Wishbone Suspension™, AWS™, Bearcat®, CATALYST™, C-TEC2™, C-TEC4™, CVTEC™ ATAC®, Mountain Cat®, Power Claw™, ProClimb™, SLIDE-ACTION Rear Suspension™, Sno Pro®, Sno-Cross™, Team Arctic®, Thundercat®, Torque-Sensing Link™ and ZR® Norseman® and BLAST® are trademarks or registered trademarks of Arctic Cat Inc.

WOODY'S LIMITED WARRANTY

INTERNATIONAL ENGINEERING & MANUFACTURING, INC. WARRANTS each product manufactured by it to be free from defects in material and workmanship under use for the purpose for which it is intended. The Company shall not be liable for damage or delays caused by defective materials or workmanship; is limited to the repair or replacement at its factory of defective article or part thereof, which may be returned to the factory, transportation charges prepaid, within one (1) year after delivery to the original purchaser. Proof of purchase is also required. The Company shall be the sole judge of the existence of any defect in the article so returned. No claims for charges incurred in the removal, disassembly or reinstallation of such article shall be allowed. Product manufactured for consumer use on snowmobiles is designed for snow or ice only, use on any other surface voids warranty.

This Warranty shall not cover any article which has been misused or neglected or damaged by accident or any article which has been altered outside the Company's factory. The Warranty for studs is void unless the studs are installed with Woody's installation tools, support plates and lock nuts; according to the recommendations set forth in Woody's Instructions and Template Patterns. This Warranty does not cover bending, chipping, flaking or carbide pin breakage or pin loss from stud wear, stud replacement labor or shipping.

WOODY'S MANUFACTURER WARRANTY RETURNS

The Company shall, in no event be liable for consequential damage or contingent liability arising out of any total or partial failure to function of any article manufactured by it or of any equipment on or in which it is used. Failure of a user to give notice to claim as to defect claimed under the provisions of this Warranty within 1 year after delivery to original user, such claim shall constitute a waiver by consumer of all claims with respect to goods and equipment.

The above warranty is in lieu of all other warranties, expressed or implied, including but not limited to the implied warranties of merchantability and fitness for a particular purpose. In no event will the company be liable for consequential damages whether or not it has notice of the possibility of any such damages.

Follow the Woody's Manufacturer Warranty Returns directions to return any product from International Engineering & Mfg., Inc.


STUD BOY WARRANTY

Liberty Products, Inc. herein noted as The Company, warrants each article manufactured by it to be free from defects in material and workmanship under use for the purpose for which it is intended. The Company shall not be liable for damage or

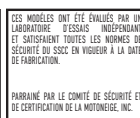
delays caused by defective materials or workmanship; is limited to the repair or replacement, at its factory; of any defective article or part thereof, which may be returned to the factory; transportation charges, prepaid; within 90 days after delivery to the original user. Proof of purchase is also required. The Company shall be the sole judge of the existence of any defect in the article so returned. No claims for charges incurred in the removal, disassembly or reinstallation of such article will be allowed. Product manufactured for snowmobiling is designed for snow or ice only. Use on any other surface voids warranty. This warranty shall not cover any article which has been misused, neglected, or damaged by accident or any article which has been altered outside The Company's factory. The Company shall, in no event, be liable for consequential damage or contingent liability arising out of any total or partial failure to function of any article manufactured by it or of any equipment on or in which it is used. Failure of a user to give notice to claim as to defect claimed under the provisions of this Warranty within ninety (90) days of the appearance of such claim shall constitute a waiver by customer of all claims with respect to such goods and equipment. No express, implied, or statutory warranty other than that herein set forth is made or authorized to be made by Liberty Products, Inc.

Snowmobiling is serious fun. Be sure to read and understand your owner's manual and please pay special attention to the safety instructions. Arctic Cat Inc. endorses and encourages the safe use of all snowmobiles. Be careful, you can get hurt. Wear a helmet and don't drink and ride. Be aware of natural hazards you may encounter, allow yourself plenty of room to safely stop your snowmobile under all conditions, and maintain your equipment. Your safety is in your hands, so take care. All scenes depicted or described in this brochure were performed by professional riders under carefully controlled conditions. Leave the fancy riding to the pros; they practice for years and train very hard to make it look easy. Never attempt to duplicate these maneuvers or encourage others to do so. We care about your safety and enjoyment of the sport.

PROPOSITION 65 WARNING

 Warning: Cancer and Reproductive Harm - www.P65Warnings.ca.gov. This WARNING applies to all items that can be ordered on this page.

Get approval in minutes for the things you want.
Ask your dealer for an application!





FIND THE RIGHT RIDE

CALL OR VISIT YOUR LOCAL ARCTIC CAT DEALER FOR MORE INFORMATION. FOR A DEALER NEAR YOU, VISIT ARCTICCAT.COM.



arcticcat.com



Snowmobiling is serious fun. Be sure to read and understand your owner's manual and please pay special attention to the safety instructions. Arctic Cat Inc. endorses and encourages the safe use of all snowmobiles. Be careful; you can get hurt. Wear an approved helmet and don't drink and ride. Be aware of natural hazards you may encounter, allow yourself plenty of room to safely stop your snowmobile under all conditions, and maintain your equipment. Your safety is in your hands, so take care. All scenes depicted or described in this brochure were performed by professional riders under carefully controlled conditions. Leave the fancy riding to the pros; they practice for years and train very hard to make it look easy. Never attempt to duplicate these maneuvers or encourage others to do so. We care about your safety and enjoyment of the sport. All materials and specifications are subject to change without notice. All specifications, competitive specifications, claims and information contained within are based on current knowledge and readily available printed material available as of January 1, 2023. All rights reserved. Cobra™ and Ripsaw™ are trademarks of Camso Inc. FOX®, FOX FLOAT® and FOX® ZERO are registered trademarks of FOX Racing Shox. Garmin is a trademark of Garmin Ltd. or its subsidiaries. ADAPT™, Alpha One®, Arctic Cat®, Arctic Mountain Suspension™, Arctic Race Suspension™, ARS™, Ascender™, Arctic Wishbone Suspension™, AWS™, Bearcat®, CATALYST™, C-TEC2™, C-TEC4™, CVTEC™ ATAC®, Mountain Cat®, Power Claw™, ProClimb™, SLIDE-ACTION Rear Suspension™, Sno Pro®, Sno-Cross™, Team Arctic®, Thundercat®, Torque-Sensing Link™ and ZR® Norseman® and BLAST® are trademarks or registered trademarks of Arctic Cat Inc. The Arctic Cat snowmobile brand is among the most widely recognized and respected in the industry. The company designs, engineers, manufactures and markets snowmobiles, in addition to related parts, garments and accessories under the Arctic Cat brand name. Offerings and features are subject to change without notice. For more information, visit: www.arcticcat.com. ARCTICCAT.COM ARCTIC CAT'S ONLINE HQ. EVERYTHING FROM MACHINES AND SPECS DOWN TO THE ACCESSORIES AND GEAR YOU NEED TO TAKE ON THE WORLD.

